

UNIVERSITY OF CALIFORNIA
RIVERSIDE

**PROPOSAL FOR
WASC ACCREDITATION**

SUBMITTED
OCTOBER 11, 2005
APPROVED DECEMBER 6, 2005

University of California, Riverside
Proposal for WASC Accreditation

Table of Contents

<u>Section</u>	<u>Pages</u>
1. Institutional Context Statement	1-2
2. Description of Outcomes	2-4
3. Constituency Involvement	4-5
4. Approach for the Preparatory Review	6
5. Approach for the Educational Effectiveness Review	6-11
6. Workplan and Milestones	12-13
7. Effectiveness of Data Gathering and Analysis Systems	13-14
8. Proposal Data Tables	14
9. Off-Campus and Distance Education Degree Programs	14
10. Institutional Stipulations	15
Attachment I	(42 Pages)
2003/04 Audited Financial Report for UC Riverside	(23 Pages)
2002/03 Audited Financial Report for UC Riverside	(24 Pages)

UNIVERSITY OF CALIFORNIA, RIVERSIDE
PROPOSAL FOR WASC ACCREDITATION
Submitted October 11, 2005; Approved December 6, 2005

1. Institutional Context Statement

The University of California, Riverside campus continues to have one of the most diverse undergraduate student bodies of any research university in the country, from the standpoint of race, ethnicity, religion, socio-economic background, and family experience with higher education. Our percentage of minority students in the total student body (47%) is exceeded by only three American Association of Universities (AAU) institutions, and our percentage of minority students among undergraduates (71%) exceeds the percentage of every AAU institution. But our percentage of minority students among graduate students (20%) is exceeded by 10 AAU institutions, and our faculty and staff are much less diverse than our undergraduates. The campus community (especially undergraduate students and staff) provides outreach and support activities to the diverse, surrounding community, and the diversity of the campus is a distinct asset in this process. The campus is addressing ways of maximizing the benefits of its diverse undergraduate population and increasing the diversity of other components of the campus.

The campus has made a strong commitment to expanding its culture of evidence focused on student learning outcomes. A new Vice Provost for Undergraduate Academic Programs has been appointed. He took part in the establishment of an Institutional Research Council, composed of individuals involved in institutional research across the campus, which is planning and coordinating the comprehensive collection, analysis, and dissemination of data on student learning outcomes and the related culture of evidence. One focus of this effort is the freshman experience at UCR – how effectively the campus is meeting the preparatory, curricular and co-curricular needs of its freshmen; how their first year can be improved; how the campus can attract more of the students it can best serve; how patterns of student success at UCR can be used by the Undergraduate Council to refine the criteria used in the comprehensive review of applicants for freshman admission; and how the campus can best define, contact, and attract as applicants those students most likely to succeed at UCR and for whom UCR would be the best UC campus for them to attend. The freshman experience is a primary focus because of the crucial role it plays in the subsequent success of undergraduates at UCR.

Another major project the campus plans to initiate is the formal definition of the faculty's aspirations for undergraduate students at the individual degree program levels, comparable to the aspirations defined for undergraduates in general and for general education (e.g., 2005-06 UCR General Catalog, Page 44). These aspirations underlie the design of the curriculum and influence the co-curricular programs, but they have not been explicitly stated in all programs. In addition, measures need to be developed that assess, at all levels, the degree to which aspirations are being achieved, and mechanisms need to be established that analyze the results and use that information to increase student learning. This process will expand the campus conformity with Standard 1 [Defining

Institutional Purposes and Ensuring Educational Objectives] (especially Criterion for Review (CFR) 1.2 [Educational objectives are clearly recognized throughout the institution]), Standard 2 [Achieving Educational Objectives Through Core Functions], and Standard 4 [Creating an Organization Committed to Learning and Improvement].

The campus has conducted a preliminary review of the four WASC Standards and has identified areas of focus for the coming years. In addition to the aspects of Standards that will be addressed by formal definition of faculty aspirations for undergraduates (see above), the campus will pay particular attention to the following Criteria for Review (CFR): 2.7 [Program Review], 3.4 [Faculty Development Activities], and 4.4 - 4.8 [criteria associated with Commitment to Learning and Improvement].

The last UCR Self-Study for Accreditation, submitted in January 1998, was an experimental study focused on the role of undergraduate education in a research university that was planning for growth from an enrollment of fewer than 10,000 students to an enrollment of 15,000 students. During the intervening seven years the campus has reached a fall enrollment of over 17,000 students, but the growth has been almost entirely in undergraduate students. There are 6,708 more undergraduates (an 80 percent increase) and only 498 more graduate students (a 33 percent increase). As a result, the campus is seriously addressing the need to achieve a better balance of undergraduate and graduate/professional programs and students through a focused plan to increase the number, quality and diversity of its graduate and professional programs and students. The campus has also reached the point where it can no longer accommodate all qualified applicants for freshman admission and is initiating selective admissions through a process known as comprehensive review. In addition, such infrastructure elements as academic support systems and types and numbers of classrooms may not have kept pace with the rapid growth in enrollment.

The last Commission action letter concerned further planning for and monitoring of enrollment growth. Now that the campus has reached a stage of more moderate growth, that action letter is less relevant. The first review of campus programs by the Substantive Change Committee took place in April 2005 and resulted in approval: plans to offer graduate MBA and MFA programs at what will become the Palm Desert campus of UCR. At WASC's request the campus did not submit an Interim Report following its last Reaccreditation Review, but was placed directly into the new cycle of Reaccreditation under the 2001 WASC Handbook of Accreditation.

2. Description of Outcomes

The campus has established a WASC Reaccreditation Steering Committee with two subcommittees: Institutional Capacity and Educational Effectiveness.

- A. The Institutional Capacity Subcommittee will conduct the Preparatory Review, with progress reports to the Steering Committee, and will draft the Preparatory Review Report for review and action by the Steering Committee. The plan of work of the Subcommittee is found under Section 4. **Approach for the Preparatory Review,**

below. The Institutional Capacity Subcommittee expects to achieve the following outcomes in the Preparatory Review and the Preparatory Review Report:

- 1) Development and publication of the University (data) portfolio to include not only an extensive set of data about the University, but also information about student self-assessment of learning, more comprehensive measures of co-curricular student learning (where possible), better measures of the effectiveness of experiential learning of students (including research, field work, and internships), and, where possible, more post-graduation measures of student learning and academic success.
 - 2) Establishment of a web-based inquiry system that will provide all members of the campus with access to institutional data relevant to student learning. The system will respond to specific questions about student characteristics and performance, producing responses that are based on clearly defined data elements, measured at specified points in time, and integrated across different data collection systems. It will include access to a longitudinal student database.
 - 3) Development of a culture of evidence that forms the basis for recommendations and decisions made by Academic Senate committees, administrators, departmental faculty, and others concerned about student learning.
 - 4) Design and implementation of formal, campus-wide reviews of undergraduate programs, leading to their improvement.
 - 5) More rigorous evaluation of curricular experiments and approaches, including new approaches to class scheduling for the satisfaction of general education requirements, new programs to deal with preparatory needs of freshmen students, attempts to deal with student deficiencies in preparation for specific courses, and attempts to reorganize curricula to meet specific student learning objectives.
 - 6) Implementation of successful curricular experiments in other applicable segments of the campus.
 - 7) The marshaling of comprehensive evidence related to the Special Themes being investigated in the Educational Effectiveness Review.
 - 8) Assignment of clear responsibilities for institutionalizing the progress achieved through the Preparatory Review process.
- B. The Educational Effectiveness Subcommittee will conduct the Educational Effectiveness Review, with progress reports to the Steering Committee, and will draft the Educational Effectiveness Report for action by the Steering Committee. The plan of work of the Subcommittee is found under Section 5. **Approach for the Educational Effectiveness Review**, below. The Educational Effectiveness

Subcommittee expects to achieve the following outcomes into the Educational Effectiveness Review and the Educational Effectiveness Report:

- 1) Explicit definition of faculty aspirations for undergraduate students at the program level and the use of faculty aspirations in the assessment of student learning at all levels.
- 2) Refinement and improvement of the campus processes for assessment of educational effectiveness (data collection and analysis and feedback into the improvement of student learning).
- 3) Establishment, by fall 2005, of faculty workshops and consultant sessions on educational effectiveness, to assist in the broader use of educational effectiveness processes on the campus.
- 4) Design and implementation of instructional development programs to improve teaching effectiveness, student learning and faculty assessment of that learning.
- 5) In depth study of specific Special Themes (see Section 5. **Approach for the Educational Effectiveness Review**, below) and the integration of the results of that study into the improvement of student learning at UCR.
- 6) Discovery of patterns of student success at UCR that can be used by the Undergraduate Council to refine the criteria used in the comprehensive review of applicants for freshman admission.
- 7) Definition of the characteristics of the students most likely to succeed at UCR and for whom UCR would be the best UC campus for them to attend (including their response to campus efforts to smooth their transition and maximize their success), followed by establishment of ways to contact and attract such students as applicants.
- 8) A comprehensive strategic plan for future development and improvement of student learning on the campus.
- 9) Assignment of clear responsibilities for institutionalizing the progress achieved through the Educational Effectiveness Review process.

3. Constituency Involvement

The Executive Vice Chancellor and Provost (who is the chief academic officer of the campus) appointed the WASC Steering Committee for the campus in November 2004 to guide the development of the Proposal for Accreditation and to implement the Proposal upon its approval by WASC. The co-chairs of the Steering Committee are a Vice Provost and a key faculty member. The faculty members were appointed on recommendation of the Academic Senate. The undergraduate representative was appointed on

recommendation of the Associated Students of the University of California, Riverside (ASUCR); the graduate student representative was appointed on recommendation of the Graduate Student Association; and the staff representative was appointed on recommendation of the Staff Assembly. Other staff members were appointed because of the special expertise they bring to the process.

The Executive Vice Chancellor and Provost also appointed two subcommittees of the Steering Committee: the Institutional Capacity Subcommittee (to conduct the Preparatory Review and draft the Preparatory Review Report) and the Educational Effectiveness Subcommittee (to conduct the Educational Effectiveness Review and draft the Educational Effectiveness Report). Each of the subcommittees is co-chaired by a Vice Provost and a key faculty member, and each has faculty, staff, and student membership.

The Steering Committee established a campus website in February 2005 (wasc.ucr.edu) to inform the campus about the WASC reaccreditation process; to post drafts of Special Theme ideas, draft reports, summaries of Steering Committee and Subcommittee meetings, and other reaccreditation information; and to solicit feedback on items posted on the website. The website has been promoted by a series of special e-mail messages to the campus community and is directly accessible from the main page of the campus website. Significant feedback on accreditation issues has been obtained through the website.

The Steering Committee held a campus retreat on March 15, 2005, to discuss and further define the Special Themes to be addressed in the Educational Effectiveness Review.

A representative of the Steering Committee makes regular progress reports to the Chancellor's Leadership Council (composed primarily of the Chancellor, the Executive Vice Chancellor/Provost, the other vice chancellors, the deans, the University Librarian, the Chair of the Academic Senate, the ASUCR President, the GSA President, and the Staff Assembly President) and to the Chancellor's Executive Leadership Team (composed primarily of the Chancellor, the Executive Vice Chancellor/Provost, the other vice chancellors, and the Chair of the Academic Senate).

The campus administration and the leadership of the Academic Senate view the WASC reaccreditation process as an excellent opportunity to focus the academic planning of the past few years on the area of student learning, to develop a culture of evidence to guide the campus for the future, and to advance the Chancellor's seven goals for the campus (to enhance UCR's reputational rankings; to invest in areas of strength; to expand opportunities for learning and personal growth for all students, undergraduate and graduate; to reshape the curriculum; to diversify our faculty, staff and graduate population; to build professional schools; and to forge closer ties with the community).

4. Approach for the Preparatory Review

The Institutional Capacity Subcommittee will conduct the Preparatory Review, with progress reports to the Steering Committee, and will draft the Preparatory Review Report for review and action by the Steering Committee. Membership of the Institutional Capacity Subcommittee includes key members of the newly formed Institutional Research Council. The Institutional Capacity Subcommittee is defining and expanding the components of the campus data portfolio, especially as the portfolio informs the Special Themes that will be investigated by the Educational Effectiveness Subcommittee. It is reviewing the ways in which campus units and leadership access and use data to reach conclusions and to design strategies for improving student learning. It is planning improvements in the whole process of data collection, analysis, and distribution, including development of a comprehensive longitudinal student database.

During 2005-06 the campus will conduct a detailed review of its compliance with the WASC Standards, using its current data portfolio and other evidence at hand, and will extend and refine the data portfolio in light of that review. Preliminary assessments of the WASC Standards suggest that the greatest effort will be expended with respect to Standard 1 [Defining Institutional Purposes and Ensuring Educational Objectives] (especially Criterion for Review (CFR) 1.2 [Educational objectives are clearly recognized throughout the institution]), Standard 2 [Achieving Educational Objectives Through Core Functions] (especially CFR 2.7 [Program review]), Standard 3 [Developing and Applying Resources and Organizational Structures to Ensure Sustainability], (especially CFR 3.4 [Faculty Development Activities]), and Standard 4 [Creating an Organization Committed to Learning and Improvement] (especially CFRs 4.4 – 4.8 [criteria associated with Commitment to Learning and Improvement]).

The campus intends to structure its Preparatory Review around the Special Themes being investigated as part of the Educational Effectiveness Review; these Themes are discussed in more detail in the next section. The campus will cross-reference the results of the Special Themes review to the WASC Standards.

Expected outcomes of the Preparatory Review and Preparatory Review Report are set forth under Section 2. **Description of Outcomes**, above.

The campus is committed to the activities outlined in this section of the Proposal and will be pursuing them in earnest during the 2005-06 academic year.

5. Approach for the Educational Effectiveness Review

The Educational Effectiveness Subcommittee will conduct the Educational Effectiveness Review, with progress reports to the Steering Committee, and will draft the Educational Effectiveness Report for action by the Steering Committee. Membership of the Subcommittee includes representatives of three key Academic Senate committees (the Graduate Council, the Undergraduate Council, and the Educational Policy Committee), as well as key administrators, staff, and students. It will attempt to broaden the degree to

which members of the campus community are involved in and committed to the assessment of student learning, through sponsorship of special workshops and visiting consultants and reports on successful campus assessment programs.

Early in the process of planning for reaccreditation the campus identified the Special Themes approach as the most productive Educational Effectiveness Report model, especially since the Special Themes could be linked to recently completed academic planning and enrollment management task force efforts and reports. The Educational Effectiveness Subcommittee will conduct a comprehensive study of three Special Themes.

The identification and definition of the three themes (see below) resulted from feedback regarding iterative postings of possible Special Themes topics on the campus reaccreditation website, discussion of possible Special Themes at a campus retreat, and discussion and evaluation of the Special Themes by the WASC Steering Committee and the subcommittees. All three Special Themes extend recent campus planning efforts and task forces and follow up on the recommendations of these task forces. The Special Themes represent the issues of greatest educational concern to the campus, as discussed under Section 1. **Institutional Context Statement**, above. All of the Special Themes will contribute to the culture of evidence and related learning; both components of the third Special Theme focus particularly on student learning.

The three Special Themes are as follows:

(1) Learning within a Campus Culture of Diversity

The campus has a long history of commitment to high achievement by a diverse student body. The goals of this study are to articulate, measure and evaluate learning outcomes within a diverse undergraduate student body, so the campus might play a leadership role in higher education as a model for incorporating diversity into a research university setting. The focus is on learning about diversity as well as the learning process in a diverse environment. The study would include such dimensions of diversity as ethnic, racial, religious, sexual orientation, economic, English as a Second Language, parental education, and learning styles. It would include increasing the degree to which members of the campus community develop better understanding of the religions, cultural histories, sexual orientations, and other cultural dimensions of other groups and devising ways of assisting members of the campus community to bridge cultural differences. It would also include ways in which the learning process should be modified to take advantage of and address the challenges of a diverse student body. Although the campus probably has a more diverse faculty, staff and graduate student population than most research universities, the study would also focus on possible ways of increasing the diversity of those groups and using that diversity to further develop the campus culture of diversity and the employment opportunities of graduate students.

Researchable questions involved in Theme 1 include determining (1) the degree to which exposure to diversity contributes to understanding of differences and ability to achieve broad success in a diverse environment, (2) the ways in which we can demonstrate that diversity serves as a pathway to excellence in individual and group performance, (3) determining if successful strategies for increasing the diversity with respect to one parameter (e.g., ethnicity) are applicable to increasing the diversity with respect to other parameters, (4) the role of experiential learning (tutoring, etc.) in expanding the understanding of diversity, (5) ways of encouraging cultural sensitivity in the teaching and learning process, and (6) the degree to which experience with and understanding of diversity increases the employment and educational outcomes of undergraduate and graduate students.

The methodology includes (1) a detailed review of the literature on diversity and excellence; (2) data collection and analysis to quantify the diversity of undergraduate students, graduate students, faculty, and staff in a number of the dimensions of diversity and then a comparison of the levels of diversity with those of other campuses and institutions; (3) surveys of attitudes and experiences before and after efforts to develop approaches to dealing with the challenges of diversity, increasing understanding of differences, and developing respect for others; and (4) experimentation with new approaches to recruiting and retaining a more diverse graduate student body, faculty, and staff.

(2) Growing and Improving Graduate and Professional Programs

The campus has been attempting to increase the number and quality of its graduate and professional programs and students, but the percentage of graduate and professional students has declined because of the much greater increase in numbers of undergraduate students. The goal is to identify and promote best practices in graduate and professional program development and graduate and professional student success. Activities would include identifying the parameters and processes of successful graduate and professional programs and generalizing these to other programs, with special attention to interdepartmental graduate programs; identifying successful graduate and professional students and determining the reasons they are successful; and improving the recruiting of graduate and professional students.

Researchable questions involved in Theme 2 include (1) identifying and promoting best practices in graduate and professional program development and graduate and professional student success, (2) determining the strengths and weaknesses of interdepartmental and interdisciplinary graduate programs relative to departmental, more specialized programs, (3) devising ways of increasing the success of interdepartmental and interdisciplinary graduate programs, (4) discovering the best ways in which to expand professional education and programs on the campus, and (5) developing better strategies for graduate and professional student recruitment.

The methodology includes (1) a detailed review of the literature on graduate and professional student performance, (2) a detailed review and comparison of UCR's

graduate and professional program reviews and assessments, (3) detailed analysis of graduate and professional student performance at UCR, (4) surveys and other data collection efforts to identify financial and other challenges to more effective recruitment of graduate and professional students and development of strategies to overcome these challenges, and (5) development and testing of approaches to creating new graduate and professional programs and increasing the quality of students admitted to all graduate and professional programs.

The general procedure for review of graduate and professional programs is as follows: Information about the program, including a mission statement, program recruitment materials, program rules and regulations, faculty CVs, student statistics, degrees awarded statistics, and student placement data, is gathered by the Graduate Division in cooperation with the program under review. A three-member external review team is selected by the Graduate Council after consulting with the program under review and directors (e.g. Department Chairs) of comparable programs at other UC campuses. Typically, the external review team consists of eminent scholars in the discipline or profession under review, with at least one a member of the faculty at another UC campus. The information collected by the Graduate Division, along with the report of the previous external review team, is provided to the new external review team in advance of a three-day site visit. During this visit, the review team meets with students and faculty associated with the program, with College and Graduate Division Deans, and with the Graduate Council review committee. The external review team then provides a detailed evaluative report to the Graduate Council. The Graduate Council then issues a set of "findings and recommendations." The graduate program must then respond to this Graduate Council report, typically by proposing changes in program rules, procedures, or direction of development. When the Graduate Council is satisfied by the program's response, the review process is closed. Each graduate or professional degree program is reviewed via this process every five to seven years.

The above process normally involves the Educational Effectiveness indicators set forth in the document Required Data Exhibits to Support the Institutional Proposal, Special Visits, and Progress Reports, but those indicators may not be explicitly or separately identified.

(3) Improving Undergraduate Student Engagement, Experience, and Learning Outcomes

The first part of this theme involves defining the faculty's aspirations for undergraduates at the level of individual programs as these relate to aspirations at the university and general education levels; developing means of measuring the degree to which undergraduates are meeting these aspirations; and devising curricular and co-curricular means of improving the degree to which undergraduates are achieving these aspirations. The goal is to have learning outcomes clearly defined, measured and evaluated at the level of the institution, general education requirements of

undergraduates, and individual majors or programs at the undergraduate and graduate level.

The second part of this theme is improving the first year experience of the heterogeneous group of undergraduate students at UCR, with a particular focus on the difficult transition from high school to college. This includes such subtopics as assessing and refining summer bridge programs and other approaches to addressing deficiencies in student preparation for college-level work, especially basic writing and mathematics skills areas; improving the performance of students in entry-level courses in majors, especially majors in science and technical fields; assessing integrative approaches to breadth requirements and expanding the successful aspects of them; developing ways of engaging students more completely in curricular and extra-curricular activities; and assessing and improving academic advising for freshmen. It also includes refining the campus comprehensive review criteria for admission of freshmen to improve the success rate of those admitted, as well as defining the characteristics of the students most likely to succeed at UCR and for whom UCR would be the best UC campus for them to attend (including their response to campus efforts to smooth their transition and maximize their success), followed by establishment of ways to contact and attract such students as applicants.

The first part of Theme 3 (defining the faculty's aspirations for undergraduates at the level of individual programs and developing measures of attainment of the aspirations at all levels) is critical to subsequent assessment efforts and is the first priority in the Educational Effectiveness process. It will be accomplished through mutual engagement of the administration and the Academic Senate, including such activities as discussion in key Academic Senate committees, town hall meetings, and broad solicitation of faculty feedback at the level of individual programs, general education, and the institution as a whole, including the development of metrics for assessment and subsequent collection and analyses of data and the design and implementation of curricular and co-curricular strategies of implementation.

Researchable questions involved in the second part of Theme 3 include (1) identifying the activities and programs in which successful freshmen at UCR are engaged [e.g., role of freshmen discovery programs, the Learning Center, various extra-curricular activities], (2) identifying the impediments to freshman success at UCR; (3) discovering and developing strategies to overcome these impediments [e.g., encouraging students to complete the University of California Entry Level Writing Requirement (formerly known as the Subject A requirement) before enrolling as freshmen]; (4) discovering patterns of student success at UCR that can be used by the Undergraduate Council to refine the criteria used in the comprehensive review of applicants for freshmen admission, and (5) defining the characteristics of those students most likely to succeed at UCR and for whom UCR would be the best UC campus for them to attend and then developing ways of attracting them to UCR.

The methodology includes (1) a detailed review of the literature on the freshman experience and performance, (2) collection and assessment of data on freshman

student performance at UCR, (3) development and assessment of various strategies for improving freshman success at UCR, and (4) development and assessment of various strategies for attracting more of the students the campus can best serve.

The Educational Effectiveness Subcommittee will conduct a detailed review of the WASC Standards in parallel with that conducted by the Institutional Capacity Subcommittee, paying particular attention to the same Standards and Criteria. The Educational Effectiveness review of the Standards will focus particularly on the definition of student learning outcomes and the measurement of educational effectiveness, especially as discussed in Standard 4 [Creating an Organization Committed to Learning and Improvement].

There have been detailed campus reviews of graduate and professional programs, including external review teams, for many years, using the kinds of educational effectiveness indicators described in the document Required Data Exhibits to Support the Institutional Proposal, Special Visits, and Progress Reports. These educational effectiveness assessments are supplemented by specialized accreditation reviews in professional fields like business, engineering, and medicine. But UCR is just beginning a comparable system of review of undergraduate programs and majors. This effort will increase the quality assurance process for undergraduate programs.

The campus is still developing effective approaches to defining and measuring student learning for undergraduates, so it is premature at this point to indicate exactly how the campus will review and evaluate actual undergraduate student work and learning results and other key indicators in support of the undergraduate component of its Educational Effectiveness Review. The first part of Special Theme 3, above (fully defining the faculty's aspirations for undergraduates, developing means of measuring the degree to which undergraduates are achieving these aspirations, and devising curricular and co-curricular means of improving the degree to which undergraduates are achieving these aspirations) is a critical first step in that process.

The Educational Effectiveness Subcommittee will work closely with the Institutional Capacity Subcommittee, the Institutional Research Council, and Academic Senate committees in defining the Educational Effectiveness processes for undergraduates. The Subcommittee will encourage broader campus involvement in educational effectiveness by holding special workshops, scheduling visits by external consultants, showcasing successful campus efforts at defining and measuring educational effectiveness, and similar projects. The campus will also encourage departments to adopt or strengthen capstone courses and other summative, integrated processes for students completing the work in their major.

Expected outcomes of the Educational Effectiveness Review and Educational Effectiveness Report are set forth under Section 2. **Description of Outcomes**, above.

The Educational Effectiveness Report will be submitted eighteen months after completion of the Preparatory Review Team visit.

6. Workplan and Milestones

The workplan and milestones are discussed in the two sections immediately above. A simple summary is set forth below.

<u>Time Period</u>	<u>Work Plans and Milestones</u>
Fall 2005 and Winter 2006	Detailed review of WASC Standards by Institutional Capacity Subcommittee and Educational Effectiveness Subcommittee; establishment of specific plans to address areas in greatest need of improvement Implementation of formal reviews of undergraduate programs and majors Workshops or educational consultant sessions on assessment of student learning
Spring 2006	Agreement on definitions of data elements in the University portfolio, assembly of the data in a common or linked database, and focus of the portfolio on the individual Special Themes Design and implementation of additional data collection processes (surveys, graduate follow up processes, etc.) Workshops or educational consultant sessions on assessment of student learning
Fall 2006	Completion of formal definition of faculty aspirations for undergraduates (Special Theme 3, part 1) Workshops or educational consultant sessions on assessment of student learning
Winter and Spring 2007	Implementation of at least a prototype of a web-based inquiry system that will provide all members of the campus with access to institutional data to answer a wide variety of questions about student learning. The system will respond to specific questions about student characteristics and performance, producing responses that are based on clearly defined data elements, measured at specified points in time, and integrated across different data collection systems. Implementation of expanded instructional development programs to improve understanding of student learning and faculty assessment of that learning.

<u>Time Period</u>	<u>Work Plans and Milestones (Continued)</u>
Winter and Spring 2007	Workshops or educational consultant sessions on assessment of student learning
Fall 2007 and Winter 2008	Completion of the Preparatory Review process and drafting of the Preparatory Review Report Workshops or educational consultant sessions on assessment of student learning
Spring 2008	Workshops or educational consultant sessions on assessment of student learning Completion and submission of the Preparatory Review Report Preparatory Review Team visit will probably be scheduled for spring 2008 or fall 2008
Fall 2008 and Winter 2009	Workshops or educational consultant sessions on assessment of student learning
Spring 2009	Completion of Special Theme reports and development of integrative analysis of them Drafting of Educational Effectiveness Report Workshops or educational consultant sessions on assessment of student learning
Fall 2009	Completion and submission of the Educational Effectiveness Report Workshops or educational consultant sessions on assessment of student learning Educational Effectiveness Team visit scheduled for winter 2010 or spring 2010

7. Effectiveness of Data Gathering and Analysis Systems

Realizing the important role played by institutional research and the critical need for quality data systems to support and foster a campus culture of evidence, the Vice Provost for Undergraduate Academic Programs and the Assistant Vice Chancellor of Institutional Planning established a campus Institutional Research Council (IRC). The IRC, composed of individuals involved in institutional research across the campus, is planning and

coordinating the comprehensive collection, storage, analysis, and dissemination of data on student learning outcomes and the related culture of evidence. The University collects much of the data needed to create a culture of evidence, but it is in different data sets, is defined in different ways in different data systems, and is not easily accessible to many members of the campus community. Data are collected on educational assessment, especially at the graduate level, but the data are not routinely updated and are not broadly available for comparative purposes. The IRC is working toward developing standard data definitions, implementing routine updating processes, and designing a web-based data inquiry system that will allow members of the campus community to access data systems to support campus assessment efforts, planning, and decision making.

When this development process is completed it will be relatively easy for Academic Senate committees, administrators, and individual departments and faculty to obtain reliable, comprehensive data for analyses of critical educational questions. A culture of evidence will develop, and the effectiveness of decision making will improve.

8. Proposal Data Tables

See Attachment I for the Proposal Data Exhibits and Tables.

9. Off-Campus and Distance Education Degree Programs

In fall 2005, the campus opened in the Palm Desert area its first off-site location where 50 percent or more of a program is being offered off-site. In April 2005 the WASC Substantive Change Committee approved the first two programs to be offered by UCR at that site: the graduate MBA program and the graduate MFA program in Creative Writing/Writing for the Performing Arts, both of which are also offered on the main campus. The Palm Desert programs will be reviewed at the same time as the main campus programs are reviewed (both currently scheduled for 2006).

10. Institutional Stipulations

As Chief Executive Officer of the University of California, Riverside (UCR), I stipulate:

- a) That UCR is using the review process to demonstrate its fulfillment of the two Core Commitments, that it will engage in the process with seriousness and candor, that data presented are accurate and that the Institutional Presentation will fairly present the institution.
- b) That UCR has published and publicly available policies in force as identified by the Commission (See Appendix 1, Page 126 [of the 2001 WASC Handbook of Accreditation]). Such policies will be available for review on request throughout the period of accreditation. Special attention will be paid to UCR's policies and recordkeeping regarding complaints and appeals.
- c) That UCR will abide by procedures adopted by the Commission to meet United States Department of Education (USDE) procedural requirements (See Section VI).
- d) That UCR will submit all regularly required data, and any data specifically requested by the Commission during the period of Accreditation.
- e) That UCR has reviewed its off-campus programs and distance education degree programs to ensure that they have been approved as required by the WASC Substantive Change process.



France A. Córdoba
Chancellor

Date: October 11, 2005

Attachment I: Basic Descriptive Data Profile for UC Riverside

Institutional Type and Organizational Structure:

Mission Statement (unless in catalog):

The UCR campus has replaced its previous mission statement with a set of 7 key goals, which are set forth on the website of the Chancellor's Office:

- **To enhance UCR's reputational rankings:** UCR will have the profile of an AAU member university
- **To invest in areas of strength:** UCR will be recognized for its distinction among all research universities in selected areas which exhibit quality and momentum
- **To expand opportunities for learning and personal growth for all students, undergraduate and graduate:** UCR will become a campus of "first choice" for applicants, and students will have a successful experience at UCR
- **To reshape the curriculum:** UCR will build on the diversity of its students and the distinction of its faculty, and connect the curriculum to the vision of UCR as an AAU institution
- **To diversify our faculty, staff and graduate population:** UCR will be a preeminent research university that has diversity as one of its measures of distinctiveness
- **To build professional schools:** UCR will offer expanded professional education in areas that respond to the needs of the state and region and that help to stimulate a knowledge-based economy
- **To forge closer ties with the community:** UCR will organize and coordinate with others to achieve common goals for prosperity and sustainability of the Inland Empire through technology transfer, attraction and retention of highly skilled jobs and industries, and responsiveness to regional issues

Organizational Chart

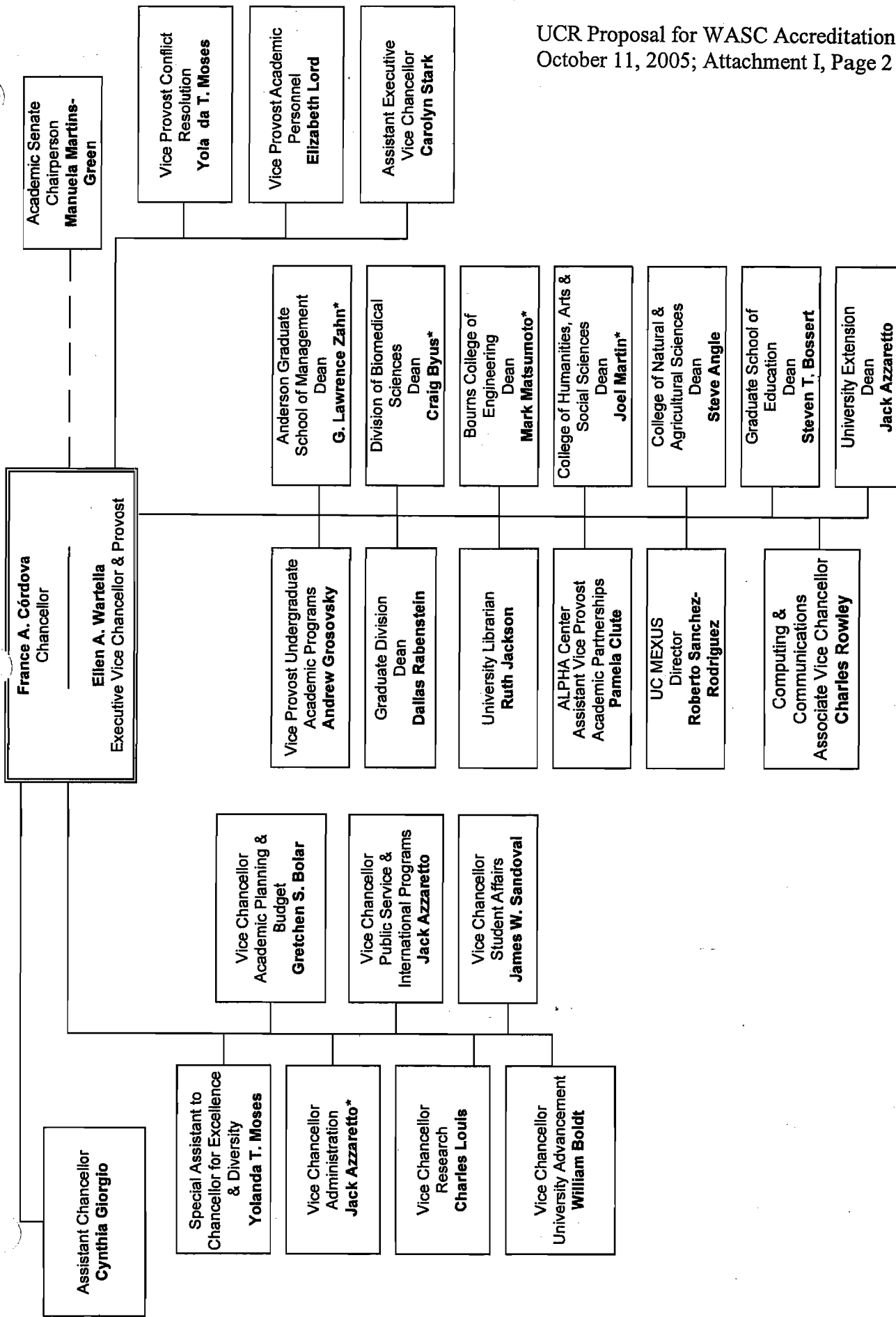
The following page is a copy of the UC Riverside Organization Chart.

Catalog

A copy of the 2005-06 UCR General Catalog is included with these materials.

Student Body Characteristics

The UCR campus has elected to provide data for the past nine years for Tables 1, 2, and 4 and for the past ten years for Table 3. The campus will add data from Fall 2005 to Tables 1, 2, and 4 when those data become available. At that point Tables 1-4 will all have ten years of data.



* Interim

Table 1: Headcount Enrollment by Level

Year	Total Head-count Enrollment	Lower Division Head-count	Upper Division Head-count	Graduate and Professional Head-count	Post-Bacc. (non-Grad) Head-count	Non-Degree Head-count	Total FTE Enrollment
Fall 1996	9,063	3,765 (41.5%)	3,900 (43.0%)	1,284 (14.2%)	114 (1.2%)	0 (0.0%)	8,714
Fall 1997	9,898	4,332 (43.8%)	4,046 (40.9%)	1,367 (13.8%)	150 (1.5%)	3 (0.0%)	9,466
Fall 1998	10,602	5,009 (47.2%)	4,116 (38.8%)	1,321 (12.4%)	151 (1.4%)	5 (0.0%)	10,136
Fall 1999	11,600	5,704 (49.2%)	4,414 (38.0%)	1,339 (11.5%)	141 (1.2%)	2 (0.0%)	11,037
Fall 2000	13,063	6,546 (50.1%)	4,888 (37.4%)	1,487 (11.4%)	140 (1.1%)	2 (0.0%)	12,420
Fall 2001	14,429	7,210 (50.0%)	5,504 (38.1%)	1,593 (11.0%)	122 (0.8%)	0 (0.0%)	13,768
Fall 2002	15,934	7,932 (49.8%)	6,190 (38.8%)	1,695 (10.6%)	115 (0.7%)	2 (0.0%)	15,283
Fall 2003	17,296	8,398 (48.6%)	6,882 (39.8%)	1,897 (11.0%)	117 (0.7%)	2 (0.0%)	16,607
Fall 2004	17,104	8,258 (48.3%)	6,831 (39.9%)	1,930 (11.3%)	85 (0.5%)	0 (0.0%)	16,585

Table 2: Headcount Enrollment by Status and Location

Year	Total Headcount Enrollment	Full-Time Enrollment	Part-Time Enrollment	On-Campus Location	Off-Campus Location
Fall 1996	9,063	8,359 (92.2%)	704 (7.8%)	9,024 (99.6%)	39 (0.4%)
Fall 1997	9,898	8,992 (90.8%)	906 (9.2%)	9,864 (99.7%)	34 (0.3%)
Fall 1998	10,602	9,642 (91.0%)	960 (9.0%)	10,555 (99.6%)	47 (0.4%)
Fall 1999	11,600	10,447 (90.1%)	1,153 (9.9%)	11,551 (99.6%)	49 (0.4%)
Fall 2000	13,063	11,724 (89.8%)	1,339 (10.2%)	12,996 (99.5%)	67 (0.5%)
Fall 2001	14,429	13,045 (90.4%)	1,384 (9.6%)	14,357 (99.5%)	72 (0.5%)
Fall 2002	15,934	14,597 (91.6%)	1,337 (8.4%)	15,856 (99.5%)	78 (0.5%)
Fall 2003	17,296	15,848 (91.6%)	1,448 (8.4%)	17,195 (99.4%)	101 (0.6%)
Fall 2004	17,104	15,949 (93.2%)	1,155 (6.7%)	17,015 (99.5%)	89 (0.5%)

Table 3: Degrees and Certificates Granted by Level (Academic Year)

NOTE: UCR does not award any degrees below the level of the Bachelor

Year	Bachelor (% of total)	Teaching Credential (% of total)	Master (% of total)	Doctorate (% of total)
1995-1996	1,546 (77.1%)	146 (7.3%)	216 (10.8%)	96 (4.8%)
1996-1997	1,615 (76.9%)	117 (5.6%)	244 (11.6%)	124 (5.9%)
1997-1998	1,693 (77.2%)	148 (6.7%)	229 (10.4%)	123 (5.6%)
1998-1999	1,782 (79.4%)	122 (5.4%)	237 (10.6%)	103 (4.6%)
1999-2000	1,784 (79.9%)	116 (5.2%)	217 (9.7%)	115 (5.2%)
2000-2001	1,963 (80.9%)	139 (5.7%)	229 (9.4%)	94 (3.9%)
2001-2002	2,195 (80.3%)	137 (5.0%)	285 (10.4%)	116 (4.2%)
2002-2003	2,513 (81.1%)	153 (4.9%)	310 (10.0%)	121 (3.9%)
2003-2004	2,893 (80.8%)	187 (5.2%)	360 (10.0%)	141 (3.9%)
2004-2005	3,080 (81.4%)	151 (4.0%)	393 (10.4%)	159 (4.2%)

Academic Programs:

The following two pages contain an inventory of the degrees offered at UC Riverside; it is taken from the 2005-06 UCR General Catalog.

Degrees

Discipline	B.A.	B.S.	M.A.	M.S.	Ph.D.
Administrative Studies ¹	•	•			
African American Studies	•				
Anthropology	•	•	•	•	•
Anthropology/Law and Society	•				
Art (Studio)	•				
Art History	•		•		
Art History/Administrative Studies	•				
Art History/Religious Studies	•				
Asian American Studies	•				
Asian Literatures and Cultures	•				
Asian Studies	•				
Biochemistry	•	•			
Biochemistry and Molecular Biology				•	•
Biological Sciences		•			
Biology	•	•			
Biomedical Sciences		•		• ²	•
Biomedical Sciences					M.D.-Ph.D.
Botany and Plant Sciences	•	•			
Business Administration (see also Management)		•			
Business Economics	•				
Cell, Molecular, and Developmental Biology				•	•
Chemistry	•	•		•	•
Chicano Studies	•				
Classical Studies	•				
Classics			•		•
Comparative Ancient Civilizations	•				
Comparative Literature	•		•		•
Computer Science		•		•	•
Conservation Biology ⁸		•			
Creative Writing	•				
Creative Writing and Writing for the Performing Arts			M.F.A.		
Dance	•		M.F.A.		
Dance History and Theory			• ²		•
Economics	•		•		•
Economics/Administrative Studies	•				
Economics/Law and Society	•				
Education ⁴			• ⁵		•
Education			M.Ed.		
Engineering					
Bioengineering		•			
Chemical		•			
Chemical and Environmental				•	•
Computer		•			
Electrical		•		•	•
Environmental		•			
Mechanical		•		•	•
English	•		•		•
Entomology	•	•		•	•
Environmental Sciences	•	•			
Environmental Sciences (Joint degree program with CSU Fresno)		•			
Environmental Sciences (Interdepartmental Graduate Program)				•	•
Environmental Toxicology				•	•
Ethnic Studies	•				
Evolution, Ecology, and Organismal Biology				•	•

¹ Administrative Studies, and Law and Society are only offered as a major combined with other programs.

² Applications are not accepted from students wishing to work toward the master's degree only.

³ New student registration in this program is not open at present.

⁴ See Graduate School of Education section for credential program information.

⁵ Also joint programs with teaching fields of Anthropology, Biology, English, French, Geological Sciences, Germanic Studies, History, Mathematics, Music, Political Science, Psychology, Sociology, and Spanish.



Degrees

Discipline	B.A.	B.S.	M.A.	M.S.	Ph.D.
Film and Visual Culture					*
French	*				* ⁷
Genetics, Genomics, and Bioinformatics				* ²	*
Geological Sciences				*	*
Geology		*			
Geophysics		*			
Germanic Studies	*		* ⁶		* ⁷
History	*		*		*
History/Administrative Studies	*				
History/Law and Society	*				
Humanities, Arts, and Social Sciences Interdisciplinary	*				
Information Systems		*			
Interdisciplinary Studies	*				
Language	*				
Latin American Studies	*				
Law and Society ¹	*				
Liberal Studies	*				
Linguistics	*				
Management			M.B.A.		
Mathematics	*	*	*	*	*
Mathematics, Applied				*	
Microbiology ^a				*	*
Music	*		*		
Music and Culture	*				
Native American Studies	*				
Neuroscience	*	*		* ²	*
Public Management ^a				*	
Philosophy	*		*		*
Philosophy/Law and Society	*				
Physical Sciences ³	*				
Physics	*	*	*	*	*
Plant Biology				*	*
Plant Biology (Plant Genetics)					*
Plant Pathology				*	*
Political Science	*		*		*
Political Science/Administrative Studies	*				
Political Science/International Affairs	*				
Political Science/Law and Society	*				
Political Science/Public Service	*				
Population Biology ^a					*
Psychology	*		* ²		*
Psychology/Law and Society	*				
Religious Studies	*				
Russian Studies	*				
Social Relations ^a	*	*			
Sociology	*	*	* ²		*
Sociology/Administrative Studies	*	*			
Sociology/Law and Society	*	*			
Soil and Water Sciences				*	*
Spanish	*		*		*
Statistics	*	*		*	
Statistics, Applied					*
Theatre	*				
Visual Art			M.F.A.		
Women's Studies	*				

Undergraduate Minors

- African American Studies
- Anthropology
- Art History
- Asian American Studies
- Asian Literatures and Cultures
- Asian Studies
- Botany and Plant Sciences
- Business Administration
- Chemistry
- Chicano Bilingual-Bicultural Studies
- Chicano Studies
- Classical Studies
- Computer Science
- Creative Writing
- Dance
- Economics
- English
- Entomology
- Environmental Sciences
- Ethnic Studies
- Film and Visual Culture
- French
- Germanic Studies
- History
- International Relations
- Italian Studies
- Journalism^a
- Labor Studies
- Latin American Studies
- Lesbian, Gay, Bisexual, Intersexual, and Transgender Studies
- Marxist Studies
- Mathematics
- Music
- Native American Studies
- Neuroscience
- Philosophy
- Political Science
- Psychology
- Religious Studies
- Russian Studies
- Sociology
- Spanish
- Statistics (Applied)
- Theatre
- Urban Studies
- Western American Studies
- Women's Studies

⁶ New student registration in this program is not open at present. For further information, contact the Graduate Division.

⁷ Doctoral studies are available through the Ph.D. program in Comparative Literature.

^a This degree has been discontinued.

Faculty and Staff

Table 4: Faculty by Employment Status

Year	Total Faculty Headcount	Full-Time Faculty	Part-Time Faculty	Total Faculty FTE
Fall 1996	615	529 (86.0%)	86 (14.0%)	563.7 (91.6%)
Fall 1997	637	541 (84.9%)	96 (15.1%)	598.6 (94.0%)
Fall 1998	666	556 (83.5%)	110 (16.5%)	608.3 (91.3%)
Fall 1999	714	596 (83.5%)	118 (16.5%)	646.9 (90.6%)
Fall 2000	762	641 (84.1%)	121 (15.9%)	680.9 (89.4%)
Fall 2001	823	699 (84.9%)	124 (15.1%)	740.9 (90.0%)
Fall 2002	860	721 (83.8%)	139 (16.2%)	763.4 (88.8%)
Fall 2003	882	748 (84.8%)	134 (15.2%)	790.5 (89.6%)
Fall 2004	851	712 (83.7%)	139 (16.3%)	756.5 (88.9%)

Fiscal, Physical and Information Resources:

UC Riverside does not collect its financial data in a form that facilitates completion of Table 5. Also, for a number of data elements, the data from the 9 campuses of the UC system are combined in the corporate system. It would take significant cost and effort to extract individual campus data from the corporate system. The table below has been completed with data that are available for the UC system as a whole.

Table 5: Key Financial Ratios for the University of California as a whole

Category	2001/02	2002/03	2003/04	2004/05
Return on Net Assets Change in Net Assets/Total Net Assets at the beginning of fiscal year	19.31%	13.94%	14.14%	Not Available Yet
Net Income Ratio Change in Unrestricted Net Assets/Total Unrestricted Revenues	5.38%	6.29%	13.42%	Not Available Yet
Operating Income Ratio Operating Income/Total Expenses	99.24%	101.41%	101.12%	Not Available Yet
Viability Ratio Expendable Net Assets/Long Term Debt	Not Available	Not Available	Not Available	Not Available
Instructional Expense per Student	Not Available Yet	Not Available Yet	Not Available Yet	Not available Yet
Net Tuition per Student	Not Available Yet	Not Available Yet	Not Available Yet	Not Available Yet

The financial audits for the most recent two years for UC Riverside are the reports for 2002-03 and 2003-04. The 2002/03 Audited Financial Reports for all UC campuses are found at: <http://universityofcalifornia.edu/annualreport/2003/>. To access the UC Riverside report, click on Campus Financial Schedules and then click on the parts of the Riverside report. The 2003/04 Audited Financial Reports for all UC campuses are found at: <http://universityofcalifornia.edu/annualreport/2004/>. To access the UC Riverside report, click on Campus Financial Schedules and then click on the parts of the Riverside report. Attached at the end of this report are hard copies of Schedules A, B, C, and D for UC Riverside for each of the two years.

Educational Effectiveness Indicators

Table 6: Inventory of Educational Effectiveness Indicators

NOTE: The information requested in this table is presented in narrative form, below, followed by detailed information in tabular form.

Learning outcomes at the institutional level for undergraduates and graduate students are set forth in the UCR General Catalog, as are learning outcomes for general education for undergraduates.

Learning outcomes for graduate and professional programs are set forth in the UCR General Catalog and departmental or program websites and are included in the materials prepared for the periodic reviews of graduate and professional programs by the Graduate Council. Graduate and professional programs at UCR are reviewed on a cycle of approximately 5 to 7 years (see Section 5. **Approach for the Educational Effectiveness Review**, Special Theme #2, of UCR's Proposal for Accreditation for a detailed discussion of the graduate and professional program review process).

Learning outcomes for undergraduate programs are set forth in the UCR General Catalog and departmental or program websites. The campus is initiating formal review procedures for undergraduate programs. More specific measures of attainment of learning objectives will also be developed for undergraduate programs. See discussion under Section 5. **Approach for the Educational Effectiveness Review** of UCR's Proposal for Accreditation.

Table 6, below, contains information on educational effectiveness indicators at the level the campus as a whole, at the level of general education, and at the level of individual academic degree programs at UC Riverside.

Table 6: Inventory of Education Effectiveness Indicators

CATEGORY	Formal learning outcomes?	Where published?	Measures/Indicators Used to Determine that Graduates Achieved Stated Outcomes	Date of Last Program Review
At Institutional Level:	Yes	'05-'06 UCR Catalog, p. 44	None formally established	N/A
General Education:	Yes	'05-'06 UCR Catalog, p. 44	None formally established	N/A
Each Degree Program:				
Administrative Studies (Joint with other B.A. or B.S. degrees only)	Yes	'05-'06 UCR Catalog, pp. 84-85, 125-126, 197, 264, 327, 346-348; corresponding websites	None formally established	None conducted
African American Studies B.A.	Yes	'05-'06 UCR Catalog, pp. 244-245; Ethnic Studies Department Website	None formally established	None conducted
Anthropology B.A./B.S.	Yes	'05-'06 UCR Catalog, p. 72; Anthropology Department Website	None formally established	None conducted
Anthropology M.A./M.S.	Yes	'05-'06 UCR Catalog, pp. 73-74; Anthropology Department Website	See guidelines for graduate program reviews	May 2005 (review finished)

Table 6: Inventory of Education Effectiveness Indicators (Continued)

CATEGORY	Formal learning outcomes?	Where published?	Measures/Indicators Used to Determine that Graduates Achieved Stated Outcomes	Date of Last Program Review
Anthropology Ph.D.	Yes	'05-'06 UCR Catalog, pp. 73-74; Anthropology Department Website	See guidelines for graduate program reviews	May 2005 (review finished)
Art B.A.	Yes	'05-'06 UCR Catalog, p. 80; Art Department Website	Senior Thesis Exhibition	None conducted
Art History B.A.	Yes	'05-'06 UCR Catalog, pp. 83-84; Art History Department Website	None formally established	None conducted
Art History M.A.	Yes	'05-'06 UCR Catalog, p. 85; Art History Department Website	See guidelines for graduate program reviews	Feb 2005 (review started)
Asian American Studies B.A.	Yes	'05-'06 UCR Catalog, pp. 244-245; Ethnic Studies Department Website	None formally established	None conducted

Table 6: Inventory of Education Effectiveness Indicators (Continued)

CATEGORY	Formal learning outcomes?	Where published?	Measures/Indicators Used to Determine that Graduates Achieved Stated Outcomes	Date of Last Program Review
Asian Literatures and Cultures B.A.	Yes	'05-'06 UCR Catalog, pp. 149-154; Comparative Literatures and Languages Website	None established	None conducted
Asian Studies B.A.	Yes	'05-'06 UCR Catalog, p. 89; Ethnic Studies Department Website	None formally established	None conducted
Biochemistry B.A./B.S.	Yes	'05-'06 UCR Catalog, pp. 93-94; Biochemistry Department Website	None formally established	None conducted
Biochemistry and Molecular Biology M.S.	Yes	'05-'06 UCR Catalog, pp. 94-95; Biochemistry Department Website	See guidelines for graduate program reviews	Oct 2001 (review finished)
Biochemistry and Molecular Biology Ph.D.	Yes	'05-'06 UCR Catalog, p. 94; Biochemistry Department Website	See guidelines for graduate program reviews	Oct 2001 (review finished)

Table 6: Inventory of Education Effectiveness Indicators (Continued)

CATEGORY	Formal learning outcomes?	Where published?	Measures/Indicators Used to Determine that Graduates Achieved Stated Outcomes	Date of Last Program Review
Biological Sciences (Biology Track) B.S.	Yes	'05-'06 UCR Catalog, pp. 98-99, 103-107	None formally established	None conducted
Biological Sciences (Bioinformatics and Genomics Track) B.S.	Yes	'05-'06 UCR Catalog, pp. 98-99, 103-107	None formally established	None conducted
Biological Sciences (Cell, Molecular, and Developmental Biology Track) B.S.	Yes	'05-'06 UCR Catalog, pp. 98, 99-100, 103-107	None formally established	None conducted
Biological Sciences (Conservation Biology Track) B.S.	Yes	'05-'06 UCR Catalog, pp. 98, 100, 103-107	None formally established	None conducted
Biological Sciences (Entomology Track) B.S.	Yes	'05-'06 UCR Catalog, pp. 98, 100-101, 103-107	None formally established	None conducted
Biological Sciences (Environmental Toxicology Track) B.S.	Yes	'05-'06 UCR Catalog, pp. 98, 101, 103-107	None formally established	None conducted
Biological Sciences (Evolution and Ecology Track) B.S.	Yes	'05-'06 UCR Catalog, pp. 98, 101, 103-107	None formally established	None conducted
Biological Sciences (Medical Biology Track) B.S.	Yes	'05-'06 UCR Catalog, pp. 98, 101-102, 103-107	None formally established	None conducted
Biological Sciences (Microbiology Track) B.S.	Yes	'05-'06 UCR Catalog, pp. 98, 102, 103-107	None formally established	None conducted

Table 6: Inventory of Education Effectiveness Indicators (Continued)

CATEGORY	Formal learning outcomes?	Where published?	Measures/Indicators Used to Determine that Graduates Achieved Stated Outcomes	Date of Last Program Review
Biological Sciences (Plant Biology Track) B.S.	Yes	'05-'06 UCR Catalog, pp. 98, 102-103, 103-107	None formally established	None conducted
Biology B.A./B.S.	Yes	'05-'06 UCR Catalog, pp.107-109; Biology Department Website	None formally established	None conducted
Biomedical Sciences B.S.	Yes	'05-'06 UCR Catalog, pp.115-116	None formally established	None conducted
Biomedical Sciences M.S.	Yes	'05-'06 UCR Catalog, pp.118-119; Biomedical Sciences Website	See guidelines for graduate program reviews	May 2003 (review finished)
Biomedical Sciences Ph.D.	Yes	'05-'06 UCR Catalog, pp.118-119; Biomedical Sciences Website	See guidelines for graduate program reviews	May 2003 (review finished)
Biomedical Sciences M.D.-Ph.D.	Yes	'05-'06 UCR Catalog, pp.118-119	See guidelines for graduate program reviews	None (new program)
Botany and Plant Sciences B.A./B.S.	Yes	'05-'06 UCR Catalog, pp.119-120; Botany and Plant Sciences Department Website	None formally established	None conducted

Table 6: Inventory of Education Effectiveness Indicators (Continued)

CATEGORY	Formal learning outcomes?	Where published?	Measures/Indicators Used to Determine that Graduates Achieved Stated Outcomes	Date of Last Program Review
Business Administration B.S.	Yes	'05-'06 UCR Catalog, pp. 125-126; A. Gary Anderson Graduate School of Management Website	None formally established	Program reviewed 2003 by AACSB
Business Economics B.A.	Yes	'05-'06 UCR Catalog, p.197; Economics Department Website	None formally established	None conducted
Cell, Molecular, and Developmental Biology M.S.	Yes	'05-'06 UCR Catalog, pp. 130-131; Cell, Molecular, and Developmental Biology Website	See guidelines for graduate program reviews	None (program started in 1999)
Cell, Molecular, and Developmental Biology Ph.D.	Yes	'05-'06 UCR Catalog, pp. 130-131; Cell, Molecular, and Developmental Biology Website	See guidelines for graduate program reviews	None (program started in 1999)

Table 6: Inventory of Education Effectiveness Indicators (Continued)

CATEGORY	Formal learning outcomes?	Where published?	Measures/Indicators Used to Determine that Graduates Achieved Stated Outcomes	Date of Last Program Review
Chemistry B.A./B.S.	Yes	'05-'06 UCR Catalog, pp. 140-141; Chemistry Department Website	None formally established	None conducted
Chemistry M.S.	Yes	'05-'06 UCR Catalog, p. 142; Chemistry Department Website	See guidelines for graduate program reviews	Feb 1998 (review finished)
Chemistry Ph.D.	Yes	'05-'06 UCR Catalog, p. 142; Chemistry Department Website	See guidelines for graduate program reviews	Feb 1998 (review finished)
Chicano Studies B.A.	Yes	'05-'06 UCR Catalog, p. 244-245; Ethnic Studies Department Website	None formally established	None conducted
Classical Studies B.A.	Yes	'05-'06 UCR Catalog, p. 148, 155; Comparative Literatures and Languages Website	None formally established	None conducted

Table 6: Inventory of Education Effectiveness Indicators (Continued)

CATEGORY	Formal learning outcomes?	Where published?	Measures/Indicators Used to Determine that Graduates Achieved Stated Outcomes	Date of Last Program Review
Classics M.A.	Yes	'05-'06 UCR Catalog, p. 148, 157	See guidelines for graduate program reviews	None (program started in 1998)
Classics Ph.D.	Yes	'05-'06 UCR Catalog, p. 148, 157-158	See guidelines for graduate program reviews	None (program started in 1998)
Comparative Ancient Civilizations B.A.	Yes	'05-'06 UCR Catalog, p. 148, 159; Comparative Ancient Civilizations Program Website	None formally established	None conducted
Comparative Literature B.A.	Yes	'05-'06 UCR Catalog, p. 148, 160; Comparative Literatures and Languages Website	None formally established	None conducted

Table 6: Inventory of Education Effectiveness Indicators (Continued)

CATEGORY	Formal learning outcomes?	Where published?	Measures/Indicators Used to Determine that Graduates Achieved Stated Outcomes	Date of Last Program Review
Comparative Literature M.A.	Yes	'05-'06 UCR Catalog, p. 148, 161; Comparative Literatures and Languages Website	See guidelines for graduate program reviews	June 2001 (review finished)
Comparative Literature Ph.D.	Yes	'05-'06 UCR Catalog, p. 148, 160-161; Comparative Literatures and Languages Website	See guidelines for graduate program reviews	June 2001 (review finished)
Computer Science B.S.	Yes	'05-'06 UCR Catalog, pp. 174-175; Computer Science and Engineering Department Website	None formally established	None conducted
Computer Science M.S.	Yes	'05-'06 UCR Catalog, p. 176; Computer Science and Engineering Department Website	See guidelines for graduate program reviews	May 1999 (review finished)

Table 6: Inventory of Education Effectiveness Indicators (Continued)

CATEGORY	Formal learning outcomes?	Where published?	Measures/Indicators Used to Determine that Graduates Achieved Stated Outcomes	Date of Last Program Review
Computer Science Ph.D.	Yes	'05-'06 UCR Catalog, pp. 176-177; Computer Science and Engineering Department Website	See guidelines for graduate program reviews	May 1999 (review finished)
Creative Writing B.A.	Yes	'05-'06 UCR Catalog, p. 181-182; Creative Writing Department Website	None formally established	None conducted
Creative Writing and Writing for the Performing Arts M.F.A.	Yes	'05-'06 UCR Catalog, p. 184; Creative Writing Department Website	See guidelines for graduate program reviews	None (program started 2002)
Dance B.A.	Yes	'05-'06 UCR Catalog, pp. 185-186; Dance Department Website	None formally established	None conducted
Dance M.F.A.	Yes	'05-'06 UCR Catalog, pp. 186-187; Dance Department Website	See guidelines for graduate program reviews	None (program started 2001)

Table 6: Inventory of Education Effectiveness Indicators (Continued)

CATEGORY	Formal learning outcomes?	Where published?	Measures/Indicators Used to Determine that Graduates Achieved Stated Outcomes	Date of Last Program Review
Dance History and Theory M.A.	Yes	'05-'06 UCR Catalog, pp. 186; Dance Department Website	See guidelines for graduate program reviews	June 2001 (review finished)
Dance History and Theory Ph.D.	Yes	'05-'06 UCR Catalog, pp. 186, 187; Dance Department Website	See guidelines for graduate program reviews	June 2001 (review finished)
Economics B.A.	Yes	'05-'06 UCR Catalog, pp. 197-198; Economics Department Website	None formally established	None conducted
Economics M.A.	Yes	'05-'06 UCR Catalog, p. 198; Economics Department Website	See guidelines for graduate program reviews	Mar 2004 (review finished)
Economics Ph.D.	Yes	'05-'06 UCR Catalog, pp. 198-199; Economics Department Website	See guidelines for graduate program reviews	Mar 2004 (review finished)

Table 6: Inventory of Education Effectiveness Indicators (Continued)

CATEGORY	Formal learning outcomes?	Where published?	Measures/Indicators Used to Determine that Graduates Achieved Stated Outcomes	Date of Last Program Review
Education M.A.	Yes	'05-'06 UCR Catalog, pp. 204-205; Graduate School of Education Website	See guidelines for graduate program reviews	Nov 1999 (review finished)
Education M.Ed.	Yes	'05-'06 UCR Catalog, pp. 204-205; Graduate School of Education Website	See guidelines for graduate program reviews	None (program started in 2001)
Education Ph.D.	Yes	'05-'06 UCR Catalog, pp. 204-206; Graduate School of Education Website	See guidelines for graduate program reviews	Nov 1999 (review finished)
Bioengineering B.S.	Yes	'05-'06 UCR Catalog, p. 97; College of Engineering Website	Indicators set forth by ABET	None (new; will be reviewed in 2006)
Chemical Engineering B.S.	Yes	'05-'06 UCR Catalog, pp. 132-133; Chemical and Environmental Engineering Department Website	Indicators set forth by ABET	2000 (by ABET)

Table 6: Inventory of Education Effectiveness Indicators (Continued)

CATEGORY	Formal learning outcomes?	Where published?	Measures/Indicators Used to Determine that Graduates Achieved Stated Outcomes	Date of Last Program Review
Chemical and Environmental Engineering M.S.	Yes	'05-'06 UCR Catalog, pp. 134-135; Chemical and Environmental Engineering Department Website	See guidelines for graduate program reviews	June 2003 (review finished)
Chemical and Environmental Engineering Ph.D.	Yes	'05-'06 UCR Catalog, pp. 134-135; Chemical and Environmental Engineering Department Website	See guidelines for graduate program reviews	June 2003 (review finished)
Computer Engineering B.S.	Yes	'05-'06 UCR Catalog, pp. 174-175; Computer Science and Engineering Department Website	Indicators set forth by ABET	2002 (by ABET)
Electrical Engineering B.S.	Yes	'05-'06 UCR Catalog, p. 217; Electrical Engineering Department Website	Indicators set forth by ABET	2000 (by ABET)

Table 6: Inventory of Education Effectiveness Indicators (Continued)

CATEGORY	Formal learning outcomes?	Where published?	Measures/Indicators Used to Determine that Graduates Achieved Stated Outcomes	Date of Last Program Review
Electrical Engineering M.S.	Yes	'05-'06 UCR Catalog, pp. 217-218; Electrical Engineering Department Website	See guidelines for graduate program reviews	Apr 2002 (review finished)
Electrical Engineering Ph.D.	Yes	'05-'06 UCR Catalog, pp. 217-219; Electrical Engineering Department Website	See guidelines for graduate program reviews	Apr 2002 (review finished)
Environmental Engineering B.S.	Yes	'05-'06 UCR Catalog, pp. 132-134; Chemical and Environmental Engineering Department Website	Indicators set forth by ABET	2000 (by ABET)
Mechanical Engineering B.S.	Yes	'05-'06 UCR Catalog, pp. 294-295; Mechanical Engineering Department Website	Indicators set forth by ABET	2000 (by ABET)

Table 6: Inventory of Education Effectiveness Indicators (Continued)

CATEGORY	Formal learning outcomes?	Where published?	Measures/Indicators Used to Determine that Graduates Achieved Stated Outcomes	Date of Last Program Review
Mechanical Engineering M.S.	Yes	'05-'06 UCR Catalog, p. 295; Mechanical Engineering Department Website	See guidelines for graduate program reviews	May 2005 (review finished)
Mechanical Engineering Ph.D.	Yes	'05-'06 UCR Catalog, pp. 285-286; Mechanical Engineering Department Website	See guidelines for graduate program reviews	May 2005 (review finished)
English B.A.	Yes	'05-'06 UCR Catalog, pp. 223-224; English Department Website	None formally established	None conducted
English M.A.	Yes	'05-'06 UCR Catalog, p. 224; English Department Website	See guidelines for graduate program reviews	Feb 2003 (review started)
English Ph.D.	Yes	'05-'06 UCR Catalog, pp. 224-225; English Department Website	See guidelines for graduate program reviews	Feb 2003 (review started)

Table 6: Inventory of Education Effectiveness Indicators (Continued)

CATEGORY	Formal learning outcomes?	Where published?	Measures/Indicators Used to Determine that Graduates Achieved Stated Outcomes	Date of Last Program Review
Entomology B.A./B.S.	Yes	'05-'06 UCR Catalog, pp. 230-231; Entomology Department Website	None formally established	None conducted
Entomology M.S.	Yes	'05-'06 UCR Catalog, pp. 231-232; Entomology Department Website	See guidelines for graduate program reviews	May 2004 (review finished)
Entomology Ph.D.	Yes	'05-'06 UCR Catalog, pp. 231-232; Entomology Department Website	See guidelines for graduate program reviews	May 2004 (review finished)
Environmental Sciences B.A./B.S.	Yes	'05-'06 UCR Catalog, pp. 235-237; Environmental Sciences Department Website	None formally established	None conducted
Environmental Sciences (Joint Degree Program with CSU Fresno) B.A./B.S.	Yes	'05-'06 UCR Catalog, p. 235; Environmental Sciences Department Website	None formally established	None conducted

Table 6: Inventory of Education Effectiveness Indicators (Continued)

CATEGORY	Formal learning outcomes?	Where published?	Measures/Indicators Used to Determine that Graduates Achieved Stated Outcomes	Date of Last Program Review
Environmental Sciences (Interdepartmental Graduate Program) M.S.	Yes	'05-'06 UCR Catalog, pp. 239-240; Environmental Sciences Department Website	See guidelines for graduate program reviews	Mar 2004 (review started)
Environmental Sciences (Interdepartmental Graduate Program) Ph.D.	Yes	'05-'06 UCR Catalog, pp. 239-241; Environmental Sciences Department Website	See guidelines for graduate program reviews	Mar 2004 (review started)
Environmental Toxicology M.S.	Yes	'05-'06 UCR Catalog, p. 242; Environmental Toxicology Graduate Program Website	See guidelines for graduate program reviews	Apr 2002 (review finished)
Environmental Toxicology Ph.D.	Yes	'05-'06 UCR Catalog, p. 242-243; Environmental Toxicology Graduate Program Website	See guidelines for graduate program reviews	Apr 2002 (review finished)

Table 6: Inventory of Education Effectiveness Indicators (Continued)

CATEGORY	Formal learning outcomes?	Where published?	Measures/Indicators Used to Determine that Graduates Achieved Stated Outcomes	Date of Last Program Review
Ethnic Studies B.A.	Yes	'05-'06 UCR Catalog, pp. 244-246; Ethnic Studies Department Website	None formally established	None conducted
Evolution, Ecology, and Organismal Biology M.S.	Yes	'05-'06 UCR Catalog, pp. 109-110; Biology Department Website	See guidelines for graduate program reviews	Jul 1998 (review finished)
Evolution, Ecology, and Organismal Biology Ph.D.	Yes	'05-'06 UCR Catalog, pp. 109-110; Biology Department Website	See guidelines for graduate program reviews	Jul 1998 (review finished)
Film and Visual Culture B.A.	Yes	'05-'06 UCR Catalog, pp. 252-254	None formally established	None conducted
French B.A.	Yes	'05-'06 UCR Catalog, pp. 148, 165; Comparative Literatures and Languages Website	None formally established	None conducted

Table 6: Inventory of Education Effectiveness Indicators (Continued)

CATEGORY	Formal learning outcomes?	Where published?	Measures/Indicators Used to Determine that Graduates Achieved Stated Outcomes	Date of Last Program Review
Genetics, Genomics, and Bioinformatics Ph.D.	Yes	'05-'06 UCR Catalog, p. 258; Graduate Program in Genetics, Genomics and Bioinformatics website	See guidelines for graduate program reviews	Nov 2003 (review finished)
Geological Sciences M.S.	Yes	'05-'06 UCR Catalog, p. 193; Earth Sciences Department Website	See guidelines for graduate program reviews	Nov 1997 (next review Feb 2006)
Geological Sciences Ph.D.	Yes	'05-'06 UCR Catalog, p. 193; Earth Sciences Department Website	See guidelines for graduate program reviews	Nov 1997 (next review Feb 2006)
Geology B.S.	Yes	'05-'06 UCR Catalog, pp. 191-192; Earth Sciences Department Website	None formally established	None conducted

Table 6: Inventory of Education Effectiveness Indicators (Continued)

CATEGORY	Formal learning outcomes?	Where published?	Measures/Indicators Used to Determine that Graduates Achieved Stated Outcomes	Date of Last Program Review
Geophysics B.S.	Yes	'05-'06 UCR Catalog, pp. 191-192; Earth Sciences Department Website	None formally established	None conducted
Germanic Studies B.A.	Yes	'05-'06 UCR Catalog, pp. 148, 167; Comparative Literatures and Languages Website	None formally established	None conducted
History B.A.	Yes	'05-'06 UCR Catalog, pp. 263-265; History Department Website	None formally established	None conducted
History M.A.	Yes	'05-'06 UCR Catalog, pp. 265-266; History Department Website	See guidelines for graduate program reviews	May 2004 (review started)
History Ph.D.	Yes	'05-'06 UCR Catalog, pp. 265-267; History Department Website	See guidelines for graduate program reviews	May 2004 (review started)

Table 6: Inventory of Education Effectiveness Indicators (Continued)

CATEGORY	Formal learning outcomes?	Where published?	Measures/Indicators Used to Determine that Graduates Achieved Stated Outcomes	Date of Last Program Review
Humanities, Arts, and Social Sciences Interdisciplinary B.A.	Yes	'05-'06 UCR Catalog, pp. 276-277; Humanities, Arts, and Social Sciences Program Website	None formally established	None conducted
Information Systems B.S.	Yes	'05-'06 UCR Catalog, pp. 174-175; Computer Science and Engineering Website	None formally established	None conducted
Interdisciplinary Studies B.A.	Yes	'05-'06 UCR Catalog, pp. 278-279	None formally established	None conducted
Language B.A.	Yes	'05-'06 UCR Catalog, pp. 148, 171; Comparative Literatures and Languages Website	None formally established	None conducted
Latin American Studies B.A.	Yes	'05-'06 UCR Catalog, p. 280; Latin American Studies Program Website	None formally established	None conducted

Table 6: Inventory of Education Effectiveness Indicators (Continued)

CATEGORY	Formal learning outcomes?	Where published?	Measures/Indicators Used to Determine that Graduates Achieved Stated Outcomes	Date of Last Program Review
Law and Society (Joint with other B.A. degrees only)	Yes	'05-'06 UCR Catalog, p. 282, 72-73, 197-198, 265, 311, 328, 335, 348-349; Law and Society Program Website	None formally established	None conducted
Liberal Studies B.A.	Yes	'05-'06 UCR Catalog, pp. 283-284; Liberal Studies Program Website	None formally established	None conducted
Linguistics B.A.	Yes	'05-'06 UCR Catalog, pp. 148, 172; Comparative Literatures and Languages Website	None formally established	None conducted
Management M.B.A.	Yes	'05-'06 UCR Catalog, pp. 284-285; A. Gary Anderson Graduate School of Management Website	See guidelines for graduate program reviews	Apr 1999 (review finished)

Table 6: Inventory of Education Effectiveness Indicators (Continued)

CATEGORY	Formal learning outcomes?	Where published?	Measures/Indicators Used to Determine that Graduates Achieved Stated Outcomes	Date of Last Program Review
Mathematics B.A./B.S.	Yes	'05-'06 UCR Catalog, pp. 289-290; Mathematics Department Website	None formally established	None conducted
Mathematics M.A./M.S.	Yes	'05-'06 UCR Catalog, pp. 290-291; Mathematics Department Website	See guidelines for graduate program reviews	Oct 2004 (review finished)
Mathematics Ph.D.	Yes	'05-'06 UCR Catalog, pp. 290-291; Mathematics Department Website	See guidelines for graduate program reviews	Oct 2004 (review finished)
Mathematics (Applied) M.S.	Yes	'05-'06 UCR Catalog, pp. 290-291; Mathematics Department Website	See guidelines for graduate program reviews	Oct 2004 (review finished)
Microbiology M.S. (not currently accepting new students)	Yes	'05-'06 UCR Catalog, pp. 290-291; Microbiology Program Website	See guidelines for graduate program reviews	Feb 2000 (review finished)
Microbiology Ph.D. (not currently accepting new students)	Yes	'05-'06 UCR Catalog, pp. 290-291; Microbiology Program Website	See guidelines for graduate program reviews	Feb 2000 (review finished)

Table 6: Inventory of Education Effectiveness Indicators (Continued)

CATEGORY	Formal learning outcomes?	Where published?	Measures/Indicators Used to Determine that Graduates Achieved Stated Outcomes	Date of Last Program Review
Music B.A.	Yes	'05-'06 UCR Catalog, pp. 300-301; Music Department Website	None formally established	None conducted
Music M.A.	Yes	'05-'06 UCR Catalog, p. 302; Music Department Website	See guidelines for graduate program reviews	Nov 2001 (review finished)
Music and Culture B.A.	Yes	'05-'06 UCR Catalog, p. 301; Music Department Website	None formally established	None conducted
Native American Studies B.A.	Yes	'05-'06 UCR Catalog, pp. 244-245; Ethnic Studies Department Website	None formally established	None conducted
Neuroscience B.A./B.S.	Yes	'05-'06 UCR Catalog, pp. 308-309; Undergraduate Neuroscience Major Website	None formally established	None conducted

Table 6: Inventory of Education Effectiveness Indicators (Continued)

CATEGORY	Formal learning outcomes?	Where published?	Measures/Indicators Used to Determine that Graduates Achieved Stated Outcomes	Date of Last Program Review
Neuroscience Ph.D.	Yes	'05-'06 UCR Catalog, pp. 308-309; Neuroscience Graduate Program Website	See guidelines for graduate program reviews	None conducted (program started 1998)
Philosophy B.A.	Yes	'05-'06 UCR Catalog, p. 311; Philosophy Department Website	None formally established	None conducted
Philosophy M.A.	Yes	'05-'06 UCR Catalog, p. 312; Philosophy Department Website	See guidelines for graduate program reviews	Nov 1999 (next review Jan 2006)
Philosophy Ph.D.	Yes	'05-'06 UCR Catalog, p. 312; Philosophy Department Website	See guidelines for graduate program reviews	Nov 1999 (next review Jan 2006)
Physics B.A./B.S.	Yes	'05-'06 UCR Catalog, pp. 317-318; Physics Department Website	None formally established	None conducted

Table 6: Inventory of Education Effectiveness Indicators (Continued)

CATEGORY	Formal learning outcomes?	Where published?	Measures/Indicators Used to Determine that Graduates Achieved Stated Outcomes	Date of Last Program Review
Physics M.A./M.S.	Yes	'05-'06 UCR Catalog, p. 318; Physics Department Website	See guidelines for graduate program reviews	Feb 1998 (review finished)
Physics Ph.D.	Yes	'05-'06 UCR Catalog, pp. 318-319; Physics Department Website	See guidelines for graduate program reviews	Feb 1998 (review finished)
Plant Biology M.S.	Yes	'05-'06 UCR Catalog, p. 121; Botany and Plant Sciences Department Website	See guidelines for graduate program reviews	Apr 2005 (review started)
Plant Biology Ph.D.	Yes	'05-'06 UCR Catalog, pp. 121-122; Botany and Plant Sciences Department Website	See guidelines for graduate program reviews	Apr 2005 (review started)
Plant Biology (Plant Genetics) Ph.D.	Yes	'05-'06 UCR Catalog, pp. 121-122; Botany and Plant Sciences Department Website	See guidelines for graduate program reviews	Apr 2005 (review started)

Table 6: Inventory of Education Effectiveness Indicators (Continued)

CATEGORY	Formal learning outcomes?	Where published?	Measures/Indicators Used to Determine that Graduates Achieved Stated Outcomes	Date of Last Program Review
Plant Pathology M.S.	Yes	'05-'06 UCR Catalog, p. 324; Plant Pathology Department Website	See guidelines for graduate program reviews	Apr 2004 (review finished)
Plant Pathology Ph.D.	Yes	'05-'06 UCR Catalog, p. 324; Plant Pathology Department Website	See guidelines for graduate program reviews	Apr 2004 (review finished)
Political Science B.A.	Yes	'05-'06 UCR Catalog, pp. 326-328; Political Science Department Website	None formally established	None conducted
Political Science M.A.	Yes	'05-'06 UCR Catalog, pp. 326-328; Political Science Department Website	See guidelines for graduate program reviews	Mar 1999 (next review May 2006)

Table 6: Inventory of Education Effectiveness Indicators (Continued)

CATEGORY	Formal learning outcomes?	Where published?	Measures/Indicators Used to Determine that Graduates Achieved Stated Outcomes	Date of Last Program Review
Political Science Ph.D.	Yes	'05-'06 UCR Catalog, pp. 326-328; Political Science Department Website	See guidelines for graduate program reviews	Mar 1999 (next review May 2006)
Psychology B.A.	Yes	'05-'06 UCR Catalog, pp. 335-336; Psychology Department Website	None formally established	None conducted
Psychology M.A.	Yes	'05-'06 UCR Catalog, pp. 336-337; Psychology Department Website	See guidelines for graduate program reviews	June 2002 (review finished)
Psychology Ph.D.	Yes	'05-'06 UCR Catalog, pp. 336-337; Psychology Department Website	See guidelines for graduate program reviews	June 2002 (review finished)
Religious Studies B.A.	Yes	'05-'06 UCR Catalog, pp. 341-342; Religious Studies Department Website	None formally established	None conducted

Table 6: Inventory of Education Effectiveness Indicators (Continued)

CATEGORY	Formal learning outcomes?	Where published?	Measures/Indicators Used to Determine that Graduates Achieved Stated Outcomes	Date of Last Program Review
Russian Studies B.A.	Yes	'05-'06 UCR Catalog, pp. 148, 170; Comparative Literatures and Languages Website	None formally established	None conducted
Social Relations B.A./B.S. (not admitting new students)	Yes	'05-'06 UCR Catalog, p. 346; Social Relations Program Website	None formally established	None conducted
Sociology B.A./B.S.	Yes	'05-'06 UCR Catalog, pp. 346-349; Sociology Department Website	None formally established	None conducted
Sociology M.A.	Yes	'05-'06 UCR Catalog, pp. 349-350; Sociology Department Website	See guidelines for graduate program reviews	Apr 2002 (review finished)
Sociology Ph.D.	Yes	'05-'06 UCR Catalog, pp. 349-350; Sociology Department Website	See guidelines for graduate program reviews	Apr 2002 (review finished)

Table 6: Inventory of Education Effectiveness Indicators (Continued)

CATEGORY	Formal learning outcomes?	Where published?	Measures/Indicators Used to Determine that Graduates Achieved Stated Outcomes	Date of Last Program Review
Soil and Water Sciences M.S.	Yes	'05-'06 UCR Catalog, p. 355; Environmental Sciences Department Website	See guidelines for graduate program reviews	Apr 2004 (review started)
Soil and Water Sciences Ph.D.	Yes	'05-'06 UCR Catalog, pp. 355-356; Environmental Sciences Department Website	See guidelines for graduate program reviews	Apr 2004 (review started)
Spanish B.A.	Yes	'05-'06 UCR Catalog, p. 259; Hispanic Studies Department Website	None formally established	None conducted
Spanish M.A.	Yes	'05-'06 UCR Catalog, pp. 259-260; Hispanic Studies Department Website	See guidelines for graduate program reviews	Dec 2004 (review finished)

Table 6: Inventory of Education Effectiveness Indicators (Continued)

CATEGORY	Formal learning outcomes?	Where published?	Measures/Indicators Used to Determine that Graduates Achieved Stated Outcomes	Date of Last Program Review
Spanish Ph.D.	Yes	'05-'06 UCR Catalog, pp. 259-260; Hispanic Studies Department Website	See guidelines for graduate program reviews	Dec 2004 (review finished)
Statistics B.A./B.S.	Yes	'05-'06 UCR Catalog, pp. 358-359; Statistics Department Website	None formally established	None conducted
Statistics M.S.	Yes	'05-'06 UCR Catalog, p. 359; Statistics Department Website	See guidelines for graduate program reviews	Nov 1998 (review finished)
Statistics (Applied) Ph.D.	Yes	'05-'06 UCR Catalog, p. 359; Statistics Department Website	See guidelines for graduate program reviews	Nov 1998 (review finished)
Theatre B.A.	Yes	'05-'06 UCR Catalog, pp. 362-363; Theatre Department Website	None formally established	None conducted

Table 6: Inventory of Education Effectiveness Indicators (Continued)

CATEGORY	Formal learning outcomes?	Where published?	Measures/Indicators Used to Determine that Graduates Achieved Stated Outcomes	Date of Last Program Review
Visual Art M.F.A.	Yes	'05-'06 UCR Catalog, pp. 80-81; Art Department Website	See guidelines for graduate program reviews	None (program started in 2003)
Women's Studies B.A.	Yes	'05-'06 UCR Catalog, p. 369; Women's Studies Department Website	None formally established	None conducted

The websites of degree programs may be access through <http://www.catalog.ucr.edu/current/degrees.html>; clicking on the program of interest will take you to the corresponding department or program website.

Guidelines for Graduate Program Reviews:

Information about the program collected and evaluated in the course of graduate program reviews includes a mission statement, program recruitment materials, program rules and regulations, faculty CVs, student statistics, degrees awarded statistics, and student placement data.

Riverside

(Dollars in Thousands)

CURRENT FUNDS RECEIPTS

2003-04 Schedule 5-A

	Total	Unrestricted		Restricted
		General	Designated	
TUITION AND FEES				
Regular session	\$ 99,168	\$ 9,754	\$ 89,414	\$ -
Summer session	4,153	-	4,153	-
University extension and continuing education	11,118	-	11,118	-
Subtotal	114,439	9,754	104,685	-
Scholarship Allowance	(21,151)	-	(21,151)	-
Total	93,288	9,754	83,534	-
FEDERAL GOVERNMENT				
Appropriations	1,173	-	-	1,173
Grants	63,468	-	10,195	53,273
Contracts	3,368	-	505	2,863
Total	68,009	-	10,700	57,309
STATE GOVERNMENT				
Appropriations	150,966	137,467	6	13,493
Contracts	5,660	-	610	5,050
Total	156,626	137,467	616	18,543
LOCAL GOVERNMENT				
	1,900	-	239	1,661
PRIVATE GIFTS, GRANTS AND CONTRACTS				
	22,209	-	2,768	19,441
SALES AND SERVICES OF EDUCATIONAL ACTIVITIES				
	3,539	-	3,539	-
SALES AND SERVICES OF AUXILIARY ENTERPRISES				
Intercollegiate athletics	-	-	-	-
Parking operations	3,745	-	3,745	-
Residence and dining halls	32,706	-	32,706	-
Student union and bookstore	7,842	-	7,842	-
Other	3,241	-	3,241	-
Subtotal	47,534	-	47,534	-
Scholarship Allowance	(7,102)	-	(7,102)	-
Total	40,432	-	40,432	-
SALES AND SERVICES OF MEDICAL CENTERS				
	-	-	-	-
OTHER SOURCES				
Service Enterprises	1,321	-	1,321	-
Other (1)	60,047	-	60,047	-
Subtotal	61,368	-	61,368	-
Scholarship Allowance	(193)	-	(193)	-
Total	61,175	-	61,175	-
Total Current Funds Receipts	\$ 447,178	\$ 147,221	\$ 203,003	\$ 96,954

(1) Includes the Non-operating revenue of the Moreno Valley land sale of \$53,800,000.

Riverside

CURRENT FUNDS EXPENDITURES
BY UNIFORM CLASSIFICATION CATEGORY

2003-04 Schedule 5-B

(Dollars in Thousands)

	Current Funds				Distribution		
	Total	Unrestricted		Restricted	Salaries and Wages	Other Expenditures	Less: Transfers
		General	Designated				
INSTRUCTION							
GENERAL ACADEMIC							
Agriculture and natural resources	\$ 6,951	\$ 6,834	\$ 83	\$ 34	\$ 4,951	\$ 2,000	\$ -
Area studies	36	36	-	-	1	35	-
Biological sciences	5,709	5,525	177	7	3,956	1,753	-
Business and management	7,900	7,098	665	137	6,153	1,747	-
Computer and Information Sciences	4,628	4,131	6	491	3,416	1,212	-
Education	4,731	4,510	116	105	3,632	1,099	-
Engineering	8,423	6,837	45	1,541	5,244	3,179	-
Fine and applied arts	6,234	5,754	127	353	4,489	1,752	7
Foreign languages	2,673	2,636	27	10	2,018	655	-
Health professions-medicine	3,841	3,255	484	102	2,797	1,044	-
Letters	10,959	10,673	124	162	8,504	2,455	-
Library sciences	119	108	12	(1)	106	13	-
Mathematics	5,777	5,717	53	7	4,503	1,274	-
Physical education	4	4	-	-	2	2	-
Physical sciences	12,369	12,204	421	(256)	8,617	3,752	-
Psychology	4,095	3,971	124	-	2,996	1,099	-
Social sciences	18,545	18,107	297	141	13,824	4,721	-
Interdisciplinary studies	1,275	1,242	1	32	876	399	-
Theology	966	959	5	2	726	240	-
Compensated absences accrual	(30)	(47)	4	13	(30)	-	-
Grants and contracts-laboratory costs	43	43	-	-	17	26	-
Other provisions	(115)	(94)	(10)	(11)	(94)	-	21
Total	105,133	99,503	2,761	2,869	76,704	28,457	28
OCCUPATIONAL AND VOCATIONAL							
	-	-	-	-	-	-	-
SUMMER SESSION							
	2,301	307	1,993	1	1,803	504	6
UNIVERSITY EXTENSION							
	13,397	8	12,323	1,066	7,341	6,822	766
EDUCATIONAL FEE EXPENSE PRORATION							
	-	(17,418)	17,418	-	-	-	-
Subtotal	120,831	82,400	34,495	3,936	85,848	35,783	800
ELIMINATED CAPITAL EXPENDITURES							
	(11,584)	(10,582)	(235)	(767)	(2,926)	(8,658)	-
Total Instruction	109,247	71,818	34,260	3,169	82,922	27,125	800

Riverside

CURRENT FUNDS EXPENDITURES
BY UNIFORM CLASSIFICATION CATEGORY

2003-04 Schedule 5-B

(Dollars in Thousands)

	Current Funds			Distribution			Less: Transfers
	Total	Unrestricted		Restricted	Salaries and Wages	Other Expenditures	
		General	Designated				
RESEARCH							
INSTITUTES AND RESEARCH CENTERS							
Agriculture and natural resources	6	4	-	2	(1)	7	-
Biological sciences	1,717	524	9	1,184	1,170	547	-
Criminology	812	214	133	465	384	428	-
Engineering	7,253	464	105	6,684	3,734	5,046	1,527
Foreign languages	1	1	-	-	1	-	-
Health professions-medicine	8	-	-	8	7	1	-
Library science	1,023	13	55	955	523	500	-
Physical sciences	2,847	-	(111)	2,958	769	2,078	-
Social sciences	1,072	257	46	769	388	684	-
Interdisciplinary studies	314	239	1	74	228	86	-
Total	15,053	1,716	238	13,099	7,203	9,377	1,527
INDIVIDUAL OR PROJECT RESEARCH							
Agriculture and natural resources	39,210	17,934	(3)	21,279	24,489	14,721	-
Area studies	222	107	3	112	169	53	-
Biological sciences	4,777	1,588	16	3,173	2,892	1,894	9
Business and management	19	31	(10)	(2)	3	16	-
Computer and information sciences	2,193	85	23	2,085	1,382	811	-
Education	2,209	26	(279)	2,462	1,524	685	-
Engineering	4,177	481	67	3,629	1,907	2,270	-
Fine and applied arts	37	23	13	1	3	34	-
Foreign languages	13	11	2	-	4	9	-
Health professions-medicine	1,552	4	(46)	1,594	799	753	-
Letters	90	6	41	43	38	52	-
Mathematics	423	266	8	149	313	110	-
Physical sciences	7,977	237	487	7,253	4,066	3,911	-
Psychology	1,389	9	16	1,364	755	634	-
Social sciences	963	145	220	598	577	386	-
Interdisciplinary studies	522	390	109	23	379	143	-
Theology	40	1	12	27	16	24	-
Compensated absences accrual	(118)	(291)	22	151	(118)	-	-
Other	796	965	(63)	(106)	650	323	177
Total	66,491	22,018	638	43,835	39,848	26,829	186
Subtotal	81,544	23,734	876	56,934	47,051	36,206	1,713
ELIMINATED CAPITAL EXPENDITURES	(4,355)	(539)	(98)	(3,718)	-	(4,355)	-
Total Research	77,189	23,195	778	53,216	47,051	31,851	1,713

Riverside

CURRENT FUNDS EXPENDITURES
BY UNIFORM CLASSIFICATION CATEGORY

2003-04 Schedule 5-B

(Dollars in Thousands)

	Current Funds			Distribution			
	Total	Unrestricted		Restricted	Salaries and Wages	Other Expenditures	Less: Transfers
		General	Designated				
<u>PUBLIC SERVICE</u>							
COMMUNITY SERVICE							
Community service projects	5,530	4,056	(907)	2,381	3,277	2,257	4
Other	(63)	(1,706)	1,649	(6)	(32)	-	31
Compensated absences accrual	(43)	(29)	(20)	6	(43)	-	-
Subtotal	5,424	2,321	722	2,381	3,202	2,257	35
ELIMINATED CAPITAL EXPENDITURES							
	(189)	(166)	(12)	(11)	-	(189)	-
Total Public Service	5,235	2,155	710	2,370	3,202	2,068	35
<u>ACADEMIC SUPPORT</u>							
LIBRARIES							
	12,110	11,804	1	305	5,675	6,453	18
MUSEUMS AND GALLERIES							
	749	607	62	80	483	268	2
AUDIO VISUAL SERVICES							
	826	802	23	1	316	510	-
COMPUTING SUPPORT							
	2,687	2,463	(2)	226	1,199	1,502	14
ANCILLARY SUPPORT							
Fine arts productions	328	322	3	3	258	149	79
Veterinary medicine clinic	182	182	-	-	124	58	-
Vivarium	118	127	(9)	-	182	131	195
Shops	1,836	789	1,041	6	1,482	1,437	1,083
Other	350	365	(57)	42	211	160	21
Total	2,814	1,785	978	51	2,257	1,935	1,378
ACADEMIC ADMINISTRATION							
	6,910	6,512	(25)	423	4,981	1,949	20
COURSE AND CURRICULUM DEVELOPMENT							
	703	650	45	8	442	261	-
COMPENSATED ABSENCES ACCRUAL							
	115	61	40	14	115	-	-
EDUCATIONAL FEE EXPENSE PRORATION							
	-	(1,922)	1,922	-	-	-	-
Subtotal	26,914	22,762	3,044	1,108	15,468	12,878	1,432
ELIMINATED CAPITAL EXPENDITURES							
	(888)	(736)	(126)	(26)	-	(888)	-

Riverside

CURRENT FUNDS EXPENDITURES
BY UNIFORM CLASSIFICATION CATEGORY

2003-04 Schedule 5-B

(Dollars in Thousands)

	Current Funds				Distribution		
	Total	Unrestricted		Restricted	Salaries and Wages	Other Expenditures	Less: Transfers
		General	Designated				
Total Academic Support	26,026	22,026	2,918	1,082	15,468	11,990	1,432
STUDENT SERVICES							
ADMINISTRATION							
Dean's of students and vice chancellor-student services	1,732	1,271	460	1	1,175	557	-
Total	1,732	1,271	460	1	1,175	557	-
SOCIAL AND CULTURAL ACTIVITIES							
Cultural programs	1,225	27	1,028	170	762	463	-
Associated students	1,973	-	1,972	1	460	1,513	-
Other social services	3,156	16	2,594	546	1,138	2,018	-
Public ceremonies	214	186	28	-	26	188	-
Recreational programs	6,776	922	5,329	525	3,186	3,733	143
Total	13,344	1,151	10,951	1,242	5,572	7,915	143
SUPPLEMENTARY EDUCATIONAL SERVICES							
	1,361	557	801	3	1,025	337	1
COUNSELING AND CAREER GUIDANCE							
Counseling	1,280	13	1,266	1	723	557	-
Disadvantaged student assistance	626	346	277	3	434	192	-
Foreign students programs	476	216	256	4	328	148	-
Placement	1,133	6	1,095	32	771	364	2
Total	3,515	581	2,894	40	2,256	1,261	2
FINANCIAL AID ADMINISTRATION							
	1,383	1,209	161	13	1,010	373	-
STUDENT ADMISSIONS AND RECORDS							
Admissions	2,163	2,096	57	10	1,353	799	(11)
Registrar	1,510	1,280	226	4	933	577	-
Total	3,673	3,376	283	14	2,286	1,376	(11)
STUDENT HEALTH SERVICES							
	3,264	14	3,214	36	1,721	1,605	62
OTHER PROVISIONS							
	116	(1,662)	1,768	10	8	161	53
COMPENSATED ABSENCES ACCRUAL							
	28	5	6	17	28	-	-

Riverside

CURRENT FUNDS EXPENDITURES
BY UNIFORM CLASSIFICATION CATEGORY

2003-04 Schedule 5-B

(Dollars in Thousands)

	Current Funds			Distribution			
	Total	Unrestricted		Restricted	Salaries and Wages	Other Expenditures	Less: Transfers
		General	Designated				
EDUCATIONAL FEE EXPENSE PRORATION	-	(6,440)	6,440	-	-	-	-
Subtotal	28,416	62	26,978	1,376	15,081	13,585	250
ELIMINATED CAPITAL EXPENDITURES	(266)	(62)	(157)	(47)	-	(266)	-
Total Student Services	28,150	-	26,821	1,329	15,081	13,319	250
INSTITUTIONAL SUPPORT							
EXECUTIVE MANAGEMENT							
Chancellors and vice-chancellors	5,582	5,098	457	27	3,641	2,161	220
Academic senate secretariat	130	130	-	-	94	36	-
Planning and budgeting	3,643	3,641	2	-	2,060	1,583	-
Total	9,355	8,869	459	27	5,795	3,780	220
FISCAL OPERATIONS							
Accounting	1,700	1,693	1	6	1,225	475	-
Auditing-internal and external	537	537	-	-	422	115	-
Cashiers	243	144	99	-	175	68	-
Contracts and grants administration	1,476	1,247	149	80	1,048	427	(1)
Bad debt and collections	-	-	-	-	-	-	-
Insurance management	149	149	-	-	113	36	-
Total	4,105	3,770	249	86	2,983	1,121	(1)
GENERAL ADMINISTRATION SERVICES							
Computer centers	4,153	4,148	5	-	3,579	3,035	2,461
Environmental health and safety	1,667	1,216	449	2	1,164	524	21
Personnel	2,959	2,387	569	3	2,189	799	29
Other	(152)	312	(467)	3	395	193	740
Total	8,627	8,063	556	8	7,327	4,551	3,251
LOGISTICAL SERVICES							
Business management	916	696	220	-	420	565	69
Construction management	94	206	(112)	-	1,180	512	1,598
Duplicating	700	-	700	-	870	1,976	2,146
Garage	750	-	750	-	613	2,061	1,924
Mail and messenger	92	-	92	-	303	1,107	1,318
Material management	899	873	22	4	891	2,273	2,265
Police	2,845	2,626	102	117	2,356	884	395
Telephone	(324)	-	(325)	1	664	1,819	2,807

Riverside

CURRENT FUNDS EXPENDITURES
BY UNIFORM CLASSIFICATION CATEGORY

2003-04 Schedule 5-B

(Dollars in Thousands)

	Current Funds				Distribution		
	Total	Unrestricted		Restricted	Salaries and Wages	Other Expenditures	Less: Transfers
		General	Designated				
Total	5,972	4,401	1,449	122	7,297	11,197	12,522
COMMUNITY RELATIONS							
Development	1,352	1,116	(54)	290	2,065	1,153	1,866
Public information	1,239	1,202	17	20	665	576	2
Publications	164	156	8	-	186	94	116
Relations with schools	286	52	1	233	101	185	-
Total	3,041	2,526	(28)	543	3,017	2,008	1,984
COMPENSATED ABSENCES ACCRUAL							
	(526)	253	(782)	3	(526)	-	-
OTHER PROVISION							
	282	(1,161)	1,261	182	(199)	3,810	3,329
EDUCATIONAL FEE EXPENSE PRORATION							
	-	(4,220)	4,220	-	-	-	-
Subtotal	30,856	22,501	7,384	971	25,694	26,467	21,305
ELIMINATED CAPITAL EXPENDITURES							
	(1,983)	(582)	(1,344)	(57)	-	(1,983)	-
Total Institutional Support	28,873	21,919	6,040	914	25,694	24,484	21,305
OPERATION AND MAINTENANCE OF PLANT							
Administration	460	460	-	-	293	167	-
Building maintenance and major repairs and alterations	4,968	4,667	192	109	1,095	4,386	513
Grounds maintenance	1,444	1,449	(5)	-	936	671	163
Janitorial service	3,489	3,488	1	-	2,199	1,290	-
Plant service	81	-	81	-	3,128	3,059	6,106
Refuse disposal	691	690	1	-	216	587	112
Utilities	7,720	7,708	12	-	785	9,594	2,659
Compensated absences accrual	(30)	(15)	(15)	-	(30)	-	-
Other	(13)	-	(13)	-	-	-	13
Educational fee expense proration	-	(3,437)	3,437	-	-	-	-
Subtotal	18,810	15,010	3,691	109	8,622	19,754	9,566
ELIMINATED CAPITAL EXPENDITURES							
	(110)	(59)	(32)	(19)	-	(110)	-
Total Operation and Maintenance of Plant	18,700	14,951	3,659	90	8,622	19,644	9,566

Riverside

(Dollars in Thousands)

CURRENT FUNDS EXPENDITURES
BY UNIFORM CLASSIFICATION CATEGORY

2003-04 Schedule 5-B

	Current Funds			Distribution			
	Total	Unrestricted		Restricted	Salaries and Wages	Other Expenditures	Less: Transfers
		General	Designated				
STUDENT FINANCIAL AID	53,272	4,232	20,283	28,757	-	53,272	-
Scholarship Allowance	(28,447)	-	(28,447)	-	-	(28,447)	-
Total Student Financial Aid	24,825	4,232	(8,164)	28,757	-	24,825	-
AUXILIARY ENTERPRISES							
Apartments	2,944	-	2,944	-	1,160	1,919	135
Bookstores	7,902	-	7,902	-	1,086	7,699	883
Cafeterias	2,521	-	2,495	26	3,570	6,075	7,124
Residence halls	20,465	-	20,465	-	3,975	17,090	600
Parking	2,250	-	2,246	4	1,529	1,079	358
Compensated absences accrual	685	-	685	-	685	-	-
Other	327	-	316	11	1,227	1,600	2,500
Subtotal	37,094	-	37,053	41	13,232	35,462	11,600
ELIMINATED CAPITAL EXPENDITURES	(465)	-	(465)	-	-	(465)	-
Total Auxiliary Enterprises	36,629	-	36,588	41	13,232	34,997	11,600
Total Current Funds Expenditures	\$ 354,874	\$ 160,296	\$ 103,610	\$ 90,968	\$ 211,272	\$ 190,303	\$ 46,701

Riverside

(Dollars in Thousands)

CURRENT FUNDS EXPENDITURES BY DEPARTMENT

2003-04 Schedule 5-C

	Current Funds				Distribution		
	Total	Unrestricted		Restricted	Salaries and Wages	Other Expenditures	Less: Transfers
		General	Designated				
<u>AGRICULTURAL EXPERIMENT STATION</u>							
<u>RESEARCH</u>							
Agricultural operations	\$ 1,528	\$ 1,404	\$ -	\$ 124	\$ 982	\$ 546	\$ -
Biochemistry	3,428	1,401	9	2,018	2,258	1,179	9
Biology	1,350	187	7	1,156	636	714	-
Botany and plant science	9,274	4,281	(40)	5,033	5,774	3,500	-
Earth sciences	711	73	77	561	380	331	-
Entomology	13,276	5,170	52	8,054	8,303	4,973	-
Nematology	1,913	1,078	28	807	1,219	694	-
Neuroscience	-	-	-	-	-	-	-
Plant pathology	4,397	1,854	(50)	2,593	2,679	1,718	-
Environmental sciences	4,941	2,489	12	2,440	3,315	1,626	-
Statistics	286	266	2	18	229	57	-
Total	41,104	18,203	97	22,804	25,775	15,338	9
<u>ACADEMIC SUPPORT</u>							
Director's office	817	817	-	-	643	174	-
Total Agricultural Experimental Station	41,921	19,020	97	22,804	26,418	15,512	9
<u>COLLEGE OF NATURAL AND AGRICULTURAL SCIENCES</u>							
<u>INSTRUCTION</u>							
Director's office	555	550	3	2	402	153	-
Aeei administration unit	166	166	-	-	130	36	-
Biochemistry	1,349	1,331	16	2	1,008	341	-
Biology	4,352	4,172	175	5	2,983	1,369	-
Bnn administration	464	464	-	-	374	90	-
Botany and plant science	1,547	1,549	8	(10)	1,022	525	-
Chemistry	6,077	5,712	337	28	3,854	2,223	-
Environmental sciences	1,181	1,174	5	2	895	286	-
Earth sciences	1,580	1,571	6	3	1,191	389	-
Entomology	1,024	989	9	26	742	282	-
Institute of geophysics and planetary physics	11	11	-	-	11	-	-
Interdepartmental programs and departments	2,250	2,218	-	32	920	1,331	-
Mathematics	4,464	4,411	47	6	3,542	921	-
Nematology	155	142	13	-	108	47	-
Neuroscience	1,563	1,525	28	10	1,092	471	-
Npps administration	79	79	-	-	64	15	-
Physics	4,521	4,732	78	(289)	3,440	1,081	-
Plant pathology	370	360	5	5	277	93	-
Statistics	1,313	1,306	6	1	959	354	-
Total	33,021	32,462	736	(177)	23,014	10,007	-

Riverside

(Dollars in Thousands)

CURRENT FUNDS EXPENDITURES BY DEPARTMENT

2003-04 Schedule 5-C

	Current Funds			Distribution			
	Total	Unrestricted		Restricted	Salaries and Wages	Other Expenditures	Less: Transfers
		General	Designated				
Total Graduate School of Management	7,938	7,129	657	152	6,156	1,782	-
SCHOOL OF EDUCATION							
INSTRUCTION	4,731	4,510	116	105	3,631	1,100	-
RESEARCH	2,209	26	(279)	2,462	1,524	685	-
PUBLIC SERVICE	130	-	130	-	70	60	-
ACADEMIC SUPPORT	89	89	-	-	73	16	-
Total School of Education	7,159	4,625	(33)	2,567	5,298	1,861	-
COLLEGE OF ENGINEERING							
INSTRUCTION							
Engineering - dean's office	402	400	-	2	281	121	-
Center for environmental research and technology	20	-	-	20	-	20	-
Center for nano science and engineering	159	159	-	-	111	48	-
Center for research in intelligent systems	22	2	20	-	24	(2)	-
Chemical/environmental engineering	2,309	2,105	8	196	1,565	744	-
Computer science & engineering	4,627	4,131	6	490	3,416	1,211	-
Electrical engineering	3,163	2,533	1	629	1,974	1,189	-
Mechanical engineering	2,508	1,799	16	693	1,400	1,108	-
Total	13,210	11,129	51	2,030	8,771	4,439	-
RESEARCH							
Center for research in intelligent systems	187	-	(1)	188	147	40	-
Center for environmental research and technology	7,066	464	105	6,497	3,587	5,006	1,527
Center for nano science and engineering	2,848	-	(112)	2,960	768	2,080	-
Chemical/environmental engineering	1,891	247	53	1,591	798	1,093	-
Computer science & engineering	2,193	85	22	2,086	1,383	810	-
Electrical engineering	1,447	216	1	1,230	702	745	-
Mechanical engineering	840	19	10	811	407	433	-
Total	16,472	1,031	78	15,363	7,792	10,207	1,527
PUBLIC SUPPORT							
Engineering - dean's office	1	-	1	-	-	1	-
Computer science & engineering	144	-	-	144	120	24	-
Total	145	-	1	144	120	25	-

Riverside

(Dollars in Thousands)

CURRENT FUNDS EXPENDITURES BY DEPARTMENT

2003-04 Schedule 5-C

	Current Funds			Distribution			
	Total	Unrestricted		Restricted	Salaries and Wages	Other Expenditures	Less: Transfers
		General	Designated				
ACADEMIC SUPPORT							
Engineering - dean's office	1,985	1,881	3	101	1,332	653	-
Total College of Engineering	31,812	14,041	133	17,638	18,015	15,324	1,527
COLLEGE OF HUMANITIES AND SOCIAL SCIENCES							
INSTRUCTION							
Dean's office	3	3	-	-	-	3	-
Anthropology	2,227	2,218	9	-	1,794	433	-
Art	1,213	1,083	23	107	814	399	-
Arts/art history administration	187	186	-	1	149	38	-
Art facility administration	128	119	-	9	75	53	-
Center for bibliographical studies	119	108	12	(1)	106	13	-
Center for ideas and society	142	141	-	1	115	27	-
Center for social and behavioral sciences	59	59	-	-	45	14	-
Comparative literature and foreign languages	2,625	2,588	27	10	2,001	624	-
Crc business unit	43	43	-	-	17	26	-
Creative writing	1,100	1,099	1	-	848	252	-
Dance	1,030	960	30	40	760	270	-
Economics	3,556	3,522	28	6	2,781	775	-
English	7,677	7,454	72	151	5,994	1,683	-
Ethnic studies	1,223	1,217	3	3	944	279	-
Gluck administration	222	-	-	222	139	83	-
Hispanic studies	1,542	1,462	80	-	1,156	386	-
History	3,457	3,390	62	5	2,670	787	-
History of art	995	973	4	18	770	233	8
Institute-research: world systems	135	135	-	-	94	41	-
Liberal studies and interdisciplinary programs	186	183	-	3	143	43	-
Music	1,193	1,103	11	79	867	327	-
Performing arts administration	364	355	6	3	270	94	-
Philosophy	2,219	2,165	50	4	1,695	524	-
Physical education	4	4	-	-	2	2	-
Political sciences	1,737	1,682	48	7	1,308	428	-
Psychology	4,095	3,971	124	-	2,997	1,098	-
Religious studies	966	959	5	2	726	240	-
Sociology	2,854	2,783	69	2	2,219	635	-
Theatre	985	931	53	1	702	283	-
Women's studies program	692	691	1	-	544	148	-
Total	42,978	41,587	718	673	32,745	10,241	8
RESEARCH							
Anthropology	107	40	1	66	8	99	-
Archaeological research unit	148	-	148	-	105	43	-

Riverside

(Dollars in Thousands)

CURRENT FUNDS EXPENDITURES BY DEPARTMENT

2003-04 Schedule 5-C

	Current Funds			Distribution			
	Total	Unrestricted		Restricted	Salaries and Wages	Other Expenditures	Less: Transfers
		General	Designated				
Art	5	5	-	-	-	5	-
Center for bibliographical studies	1,022	13	54	955	522	500	-
Center for ideas and society	484	188	-	296	245	239	-
Center for social and behavioral sciences	291	68	42	181	137	154	-
Comparative literature and foreign languages	14	12	2	-	4	10	-
Creative writing	3	2	1	-	-	3	-
Dance	12	10	2	-	1	11	-
Economics	45	44	1	-	19	26	-
English	25	3	22	-	4	21	-
Ethnic studies	49	20	3	26	26	23	-
Hispanic studies	12	2	6	4	6	6	-
History	161	7	26	128	117	44	-
History of art	10	7	2	1	2	8	-
Institute reserach: world systems	4	-	-	4	3	1	-
Music	8	-	8	-	-	8	-
Philosophy	62	1	18	43	34	28	-
Political science	15	-	11	4	-	15	-
Psychology	1,389	9	15	1,365	755	634	-
Religious studies	40	1	12	27	16	24	-
Robert presley center crime and justice	812	214	132	466	384	428	-
Sociology	421	33	18	370	297	124	-
Theatre	1	-	1	-	-	1	-
Women's studies	6	2	4	-	1	5	-
Total	5,146	681	529	3,936	2,686	2,460	-
ACADEMIC SUPPORT							
Dean's office	2,301	2,060	(29)	270	1,717	605	21
Anthropology	15	66	(51)	-	-	15	-
Art gallery	136	93	-	43	73	63	-
English	5	-	-	5	2	3	-
Liberal studies and interdisciplinary programs	100	100	-	-	70	30	-
Psychology	(9)	-	(9)	-	13	11	33
UCR/california museum of photography	612	513	62	37	410	204	2
Theatre facility	328	322	3	3	257	149	78
Total	3,488	3,154	(24)	358	2,542	1,080	134
PUBLIC SERVICE							
Center for social and behavioral sciences	26	-	26	-	22	4	-
Total	26	-	26	-	22	4	-
Total College of Humanities and Social Sciences	51,638	45,422	1,249	4,967	37,995	13,785	142

Riverside

(Dollars in Thousands)

CURRENT FUNDS EXPENDITURES BY DEPARTMENT

2003-04 Schedule 5-C

	Current Funds			Distribution			
	Total	Unrestricted		Restricted	Salaries and Wages	Other Expenditures	Less: Transfers
		General	Designated				
<u>AIR POLLUTION RESEARCH CENTER</u>							
RESEARCH	825	487	5	333	545	280	-
<u>BIOMEDICAL UCR/UCLA PROGRAM</u>							
INSTRUCTION	3,437	2,855	483	99	2,512	925	-
RESEARCH	1,560	4	(46)	1,602	806	754	-
ACADEMIC SUPPORT	140	140	(1)	1	129	58	47
Total	5,137	2,999	436	1,702	3,447	1,737	47
<u>GRADUATE DIVISION</u>							
ACADEMIC SUPPORT	1,530	1,483	15	32	1,102	428	-
Total	1,530	1,483	15	32	1,102	428	-
<u>SUMMER SESSION</u>							
INSTRUCTION	2,297	307	1,989	1	1,803	500	6
<u>UNIVERSITY EXTENSION</u>							
INSTRUCTION							
Professional programs	13,397	9	12,323	1,065	7,340	6,821	764
<u>CAMPUS WIDE PROGRAMS</u>							
INSTRUCTION							
Other	(110)	(92)	(3)	(15)	(91)	3	22
Compensated absences accrual	(30)	(47)	4	13	(30)	-	-
Educational fee expense proration	-	(17,418)	17,418	-	-	-	-
Total	(140)	(17,557)	17,419	(2)	(121)	3	22
<u>RESEARCH</u>							
Research committee	174	174	-	-	-	174	-
UC mexus	242	239	1	2	174	68	-
Other	133	194	(61)	-	256	54	177
Compensated absences accrual	(119)	(292)	22	151	(119)	-	-
Total	430	315	(38)	153	311	296	177

Riverside

(Dollars in Thousands)

CURRENT FUNDS EXPENDITURES BY DEPARTMENT

2003-04 Schedule 5-C

	Current Funds			Distribution			
	Total	Unrestricted		Restricted	Salaries and Wages	Other Expenditures	Less: Transfers
		General	Designated				
PUBLIC SERVICE							
Alpha center	1,392	673	6	713	772	620	-
Botanical gardens	85	-	85	-	37	48	-
Botany and plant sciences	99	-	99	-	69	30	-
Cell biology & neuroscience	5	5	-	-	-	5	-
Center for exotic pest research	(3)	-	(3)	-	-	(3)	-
Cultural events	327	1	298	28	94	233	-
Dean of students - sa	40	40	-	-	5	35	-
Early academic outreach	1,993	1,014	(2)	981	1,121	872	-
Entomology	17	-	10	7	-	17	-
Environmental sciences	49	2	47	-	30	19	-
Relations with schools	518	518	-	-	308	210	-
VC -public services and international programs	122	122	-	-	85	37	-
Work study programs- contracting agencies	507	-	47	460	500	7	-
Other	(4)	(32)	3	25	12	19	35
Compensated absences accrual	(43)	(29)	(20)	6	(43)	-	-
Total	5,104	2,314	570	2,220	2,990	2,149	35
ACADEMIC SUPPORT							
Academic computing center	2,686	2,462	(2)	226	1,199	1,501	14
Departmental academic support	263	244	19	-	140	123	-
Instructional media	826	802	23	1	316	510	-
International services - eap	21	21	-	-	16	5	-
Honors	418	379	37	2	247	171	-
Library general	12,110	11,806	1	303	5,676	6,452	18
Office of the campus veterinarian	182	182	-	-	124	58	-
Vice chancellor - research	53	53	-	-	33	20	-
Compensated absences accrual	116	62	40	14	116	-	-
Other	(18)	-	(16)	(2)	-	-	18
Educational fee expense proration	-	(1,922)	1,922	-	-	-	-
Total	16,657	14,089	2,024	544	7,867	8,840	50
Total Campus-Wide Programs	22,051	(839)	19,975	2,915	11,047	11,288	284
STUDENT SERVICES							
Vice chancellor student services	1,200	987	212	1	833	367	-
Dean of students - sa	354	131	223	-	234	120	-
AVC - enrollment	387	387	-	-	188	199	-
AVC - student services -student development	70	70	-	-	53	17	-
Admissions office	1,063	1,055	2	6	755	308	-
Associated students	1,954	-	1,953	1	448	1,506	-
Campus health service	3,264	14	3,214	36	1,721	1,605	62
Career services center	1,133	6	1,095	32	771	364	2
Child development center	821	-	284	537	509	312	-
Counseling center	799	13	785	1	599	200	-

Riverside

(Dollars in Thousands)

CURRENT FUNDS EXPENDITURES BY DEPARTMENT

2003-04 Schedule 5-C

	Current Funds			Distribution			
	Total	Unrestricted		Restricted	Salaries and Wages	Other Expenditures	Less: Transfers
		General	Designated				
Cultural events	48	3	45	-	25	23	-
Early academic outreach	33	25	7	1	8	25	-
Event management and protocol	212	186	26	-	26	186	-
Financial aids administration	1,426	1,207	161	58	1,009	417	-
Intercollegiate athletics	4,714	872	3,315	527	2,180	2,574	40
International service center	476	216	256	4	328	148	-
Learning center	1,362	556	803	3	1,025	337	-
Recreation/student recreation center	2,038	25	2,013	-	1,003	1,136	101
Registrar office	1,218	988	226	4	804	414	-
Relations with schools	1,176	1,072	101	3	658	507	(11)
Student fees	137	-	137	-	-	137	-
Student programs	1,669	24	1,475	170	1,053	616	-
Student life and leadership center	1,314	2	1,306	6	403	911	-
Student special services	627	347	277	3	435	192	-
University commons	953	-	953	-	-	953	-
Other	(61)	(1,689)	1,663	(35)	(16)	11	56
Compensated absences accrual	29	5	6	18	29	-	-
Educational fee expense proration	-	(6,440)	6,440	-	-	-	-
Total Student Services	28,416	62	26,978	1,376	15,081	13,585	250
INSTITUTIONAL SUPPORT							
Chancellor's office	3,559	1,929	1,514	116	1,195	2,662	298
Executive vice chancellor	1,630	1,618	7	5	1,209	421	-
Vice chancellor administration	89	698	(609)	-	526	190	627
Vice chancellor - research	1,659	1,430	149	80	1,181	477	(1)
Vice chancellor university advancement	489	440	49	-	284	205	-
Academic planning and budget	3,646	3,643	3	-	2,062	1,584	-
Academic senate office	130	130	-	-	94	36	-
Accounting	1,586	1,579	1	6	1,135	451	-
Admin cost recovery	(1,262)	-	(1,262)	-	-	-	1,262
Affirmative action	279	279	-	-	185	94	-
Alumni and constituent relations	474	452	6	16	330	146	2
Audit and advisory services	537	537	-	-	422	115	-
Building lease office	173	173	-	-	-	173	-
Building lease classroom	126	126	-	-	-	126	-
Campus life, fac and svcs admin	5	-	5	-	208	79	282
Cashier	243	144	99	-	175	68	-
Computing and communications	4,799	3,053	1,743	3	4,000	4,942	4,143
Creative design services	79	71	8	-	147	48	116
Design and construction	94	206	(112)	-	1,180	512	1,598
Desert facilities and programs	656	656	-	-	231	425	-
Development	232	75	(103)	260	1,275	823	1,866
Early academic outreach	286	52	1	233	100	186	-
Environmental health and safety	1,667	1,216	449	2	1,164	524	21
Equipment management	93	85	8	-	84	38	29
Event management and protocol	290	268	2	20	148	142	-
Finance and administration	743	740	3	-	544	199	-
Fleet services	164	-	164	-	351	1,586	1,773

Riverside

(Dollars in Thousands)

CURRENT FUNDS EXPENDITURES BY DEPARTMENT

2003-04 Schedule 5-C

	Current Funds			Distribution			
	Total	Unrestricted		Restricted	Salaries and Wages	Other Expenditures	Less: Transfers
		General	Designated				
Governmental and community relations	226	211	15	-	136	92	2
Human resources	1,570	1,155	414	1	1,143	456	29
Insurance	149	149	-	-	113	36	-
Intercollegiate athletics	315	245	40	30	211	104	-
Labor relations	423	274	149	-	336	87	-
Mail services	93	-	93	-	303	1,108	1,318
Marketing media relations	723	723	-	-	381	342	-
New initiatives and economic development	348	344	3	1	250	98	-
Ombudsman	73	73	-	-	60	13	-
Printing and reprographics	700	-	700	-	870	1,976	2,146
Police	2,845	2,626	102	117	2,356	884	395
Publications	85	85	-	-	39	46	-
Purchasing	621	598	22	1	520	177	76
Receiving	186	190	(4)	-	107	79	-
Storehouse	(1)	-	(4)	3	179	1,979	2,159
Student business services	617	397	220	-	420	266	69
Telecommunications	(325)	-	(325)	-	664	1,818	2,807
Transportation and parking services	586	-	586	-	262	476	152
Other	(318)	(202)	(190)	74	(360)	178	136
Bad debts and collections	-	-	-	-	-	-	-
Compensated absences accrual	(526)	253	(782)	3	(526)	-	-
Educational fee expense proration	-	(4,220)	4,220	-	-	-	-
Total Institutional Support	30,856	22,501	7,384	971	25,694	26,467	21,305
OPERATION AND MAINTENANCE OF PLANT							
Superintendance	460	460	-	-	293	167	-
Building maintenance	4,581	4,570	11	-	751	3,830	-
Environmental health and safety	466	466	-	-	109	357	-
Grounds maintenance	1,444	1,449	(5)	-	936	671	163
Janitorial service	3,476	3,488	(12)	-	2,461	1,529	514
Plant service	82	-	82	-	3,128	3,060	6,106
Refuse disposal	225	224	1	-	107	231	113
Steam	1,247	1,241	6	-	699	588	40
Utilities	6,473	6,469	4	-	84	9,006	2,617
Chancellors house maintenance	91	-	91	-	-	91	-
Boyd desert research center	4	-	4	-	-	4	-
Emerson reserve	16	6	10	-	5	11	-
Granite mountain reserve	48	-	46	2	2	46	-
James san jacinto mountains reserve	131	89	17	25	73	58	-
Motte reserve	84	-	2	82	-	84	-
Natural land and water reserve system	25	-	25	-	4	21	-
Other	(13)	-	(13)	-	-	-	13
Compensated absences accrual	(30)	(15)	(15)	-	(30)	-	-
Educational fee expense proration	-	(3,437)	3,437	-	-	-	-
Total Operation and Maintenance of Plant	18,810	15,010	3,691	109	8,622	19,754	9,566
STUDENT FINANCIAL AID	53,272	4,232	20,283	28,757	-	53,272	-
Scholarship Allowance	(28,447)	-	(28,447)	-	-	(28,447)	-

Riverside

(Dollars in Thousands)

CURRENT FUNDS EXPENDITURES BY DEPARTMENT

2003-04 Schedule 5-C

	Current Funds			Distribution			
	Total	Unrestricted		Restricted	Salaries and Wages	Other Expenditures	Less: Transfers
		General	Designated				
Total Student Financial Aid	24,825	4,232	(8,164)	28,757	-	24,825	-
AUXILIARY ENTERPRISES							
Residence halls	20,359	-	20,359	-	3,908	16,983	532
Campus apartments	2,944	-	2,944	-	1,160	1,919	135
Bookstore	7,902	-	7,902	-	1,086	7,700	884
Campus life, facilities and services administration	166	-	166	-	125	137	96
Child care center	517	-	507	10	358	159	-
Dining service	2,521	-	2,495	26	3,570	6,076	7,125
Housing administration	-	-	-	-	242	590	832
Student business services/cashiers	(5)	-	(5)	-	56	138	199
Student center direction	(253)	-	(254)	1	380	456	1,089
Transportation and parking services	2,108	-	2,106	2	1,425	1,016	333
University extension	314	-	312	2	237	288	211
Other	(164)	-	(164)	-	-	-	164
Compensated absences accrual	685	-	685	-	685	-	-
Total Auxiliary Enterprises	37,094	-	37,053	41	13,232	35,462	11,600
Subtotal	374,714	173,015	106,086	95,613	214,202	207,213	46,701
Eliminated Capital Expenditures	(19,840)	(12,719)	(2,476)	(4,645)	(2,930)	(16,910)	-
Total Current Funds Expenditures	\$ 354,874	\$ 160,296	\$ 103,610	\$ 90,968	\$ 211,272	\$ 190,303	\$ 46,701

Riverside

(Dollars in Thousands)

CURRENT FUNDS EXPENDITURES BY FUND SOURCE

2003-04 Schedule 5-D

	Current Funds			Distribution		
	Total	Unrestricted	Restricted	Salaries and Wages	Other Expenditures	Less: Transfers
GENERAL FUNDS (1)						
Instruction	\$ 71,823	\$ 71,823	\$ -	\$ 72,205	\$ (382)	\$ -
Research	23,200	23,200	-	16,657	6,544	1
Public service	2,147	2,147	-	1,359	788	-
Academic support	22,026	22,026	-	13,842	8,184	-
Medical centers	-	-	-	-	-	-
Student services	-	-	-	5,528	(5,528)	-
Institutional support	21,918	21,918	-	18,044	5,506	1,632
Operation and maintenance of plant	14,951	14,951	-	5,059	9,892	-
Student financial aid	4,231	4,231	-	-	4,231	-
Auxiliary enterprises	-	-	-	-	-	-
Total	160,296	160,296	-	132,694	29,235	1,633
TUITION AND FEES						
Instruction	33,256	33,256	-	8,917	25,087	748
Research	-	-	-	-	-	-
Public service	166	166	-	95	71	-
Academic support	1,931	1,931	-	3	1,928	-
Medical centers	-	-	-	-	-	-
Student services	22,482	22,482	-	7,608	14,874	-
Institutional support	4,233	4,233	-	-	4,233	-
Operation and maintenance of plant	3,437	3,437	-	-	3,437	-
Student financial aid	(1,427)	(1,427)	-	-	(1,427)	-
Auxiliary enterprises	27	27	-	-	27	-
Total	64,105	64,105	-	16,623	48,230	748

Riverside

(Dollars in Thousands)

CURRENT FUNDS EXPENDITURES BY FUND SOURCE

2003-04 Schedule 5-D

	Current Funds		Distribution			
	Total	Unrestricted	Restricted	Salaries and Wages	Other Expenditures	Less: Transfers
FEDERAL GOVERNMENT						
<u>Appropriations</u>						
Research	1,173	-	1,173	1,155	18	-
Public service	-	-	-	-	-	-
Academic support	-	-	-	-	-	-
Total	1,173	-	1,173	1,155	18	-
<u>Grants</u>						
Instruction	90	-	90	89	1	-
Research	28,126	-	28,126	15,134	12,992	-
Public service	2,169	-	2,169	1,386	783	-
Academic support	398	-	398	278	120	-
Medical centers	-	-	-	-	-	-
Student services	196	-	196	164	32	-
Institutional support	183	-	183	156	27	-
Operation and maintenance of plant	-	-	-	-	-	-
Student financial aid	21,837	-	21,837	-	21,837	-
Auxiliary enterprises	39	-	39	39	-	-
Total	53,038	-	53,038	17,246	35,792	-
<u>Contracts</u>						
Instruction	-	-	-	-	-	-
Research	2,821	-	2,821	1,440	1,381	-
Public Service	-	-	-	-	-	-
Academic support	-	-	-	-	-	-
Medical centers	-	-	-	-	-	-
Student services	-	-	-	-	-	-
Institutional support	-	-	-	-	-	-
Operation and maintenance of plant	-	-	-	-	-	-
Student financial aid	-	-	-	-	-	-
Total	2,821	-	2,821	1,440	1,381	-
Total Federal Government	57,032	-	57,032	19,841	37,191	-

Riverside

(Dollars in Thousands)

CURRENT FUNDS EXPENDITURES BY FUND SOURCE

2003-04 Schedule 5-D

	Current Funds		Distribution			
	Total	Unrestricted	Restricted	Salaries and Wages	Other Expenditures	Less: Transfers
<u>SPECIAL STATE APPROPRIATIONS AND CONTRACTS (2)</u>						
Instruction	2,306	-	2,306	986	1,320	-
Research	4,530	-	4,530	2,678	1,852	-
Public service	45	-	45	9	36	-
Academic support	255	-	255	109	146	-
Medical centers	-	-	-	-	-	-
Student services	458	-	458	245	213	-
Institutional support	275	-	275	58	217	-
Operation and maintenance of plant	-	-	-	-	-	-
Student financial aid	5,811	-	5,811	-	5,811	-
Auxiliary enterprises	-	-	-	-	-	-
Total	13,680	-	13,680	4,085	9,595	-
<u>LOCAL GOVERNMENT</u>						
Instruction	-	-	-	-	-	-
Research	1,724	-	1,724	1,073	651	-
Public service	3	-	3	3	-	-
Academic support	-	-	-	-	-	-
Medical centers	-	-	-	-	-	-
Student services	-	-	-	-	-	-
Institutional support	-	-	-	-	-	-
Operation and maintenance of plant	-	-	-	-	-	-
Student financial aid	-	-	-	-	-	-
Auxiliary enterprises	-	-	-	-	-	-
Total	1,727	-	1,727	1,076	651	-
<u>PRIVATE GIFTS, GRANTS AND CONTRACTS</u>						
Instruction	707	-	707	314	404	11
Research	14,391	-	14,391	7,523	6,980	112
Public service	153	-	153	89	70	6
Academic support	427	-	427	203	226	2
Medical centers	-	-	-	-	-	-
Student services	673	-	673	90	617	34
Institutional support	456	-	456	121	341	6
Operation and maintenance of plant	81	-	81	8	73	-
Student financial aid	478	-	478	-	478	-
Auxiliary enterprises	2	-	2	-	2	-
Total	17,368	-	17,368	8,348	9,191	171

Riverside

(Dollars in Thousands)

CURRENT FUNDS EXPENDITURES BY FUND SOURCE

2003-04 Schedule 5-D

	Current Funds		Distribution			
	Total	Unrestricted	Restricted	Salaries and Wages	Other Expenditures	Less: Transfers
<u>ENDOWMENT AND SIMILAR FUNDS</u>						
Instruction	508	442	66	284	225	1
Research	721	270	451	364	366	9
Public service	41	41	-	-	41	-
Academic support	36	34	2	13	24	1
Medical centers	-	-	-	-	-	-
Student services	6	4	2	-	7	1
Institutional support	939	939	-	21	918	-
Operation and maintenance of plant	119	110	9	4	115	-
Student financial aid	706	75	631	-	706	-
Auxiliary enterprises	-	-	-	-	-	-
Total	3,076	1,915	1,161	686	2,402	12
<u>SALES AND SERVICES OF EDUCATIONAL ACTIVITIES</u>						
Instruction	177	177	-	48	140	11
Research	216	216	-	497	516	797
Public service	364	364	-	169	212	17
Academic support	1,037	1,037	-	715	1,030	708
Student services	1,115	1,115	-	280	966	131
Institutional support	74	74	-	72	106	104
Operation and maintenance of plant	40	40	-	40	-	-
Student financial aid	-	-	-	-	-	-
Total	3,023	3,023	-	1,821	2,970	1,768
<u>SALES AND SERVICES OF AUXILIARY ENTERPRISES</u>						
Instruction	29	29	-	-	57	28
Academic support	-	-	-	-	-	-
Student services	216	216	-	93	123	-
Institutional support	(702)	(702)	-	(702)	-	-
Operation and maintenance of plant	-	-	-	-	-	-
Student financial aid	(7,102)	(7,102)	-	-	(7,102)	-
Auxiliary enterprises	36,446	36,446	-	13,193	34,853	11,600
Total	28,887	28,887	-	12,584	27,931	11,628

Riverside

(Dollars in Thousands)

CURRENT FUNDS EXPENDITURES BY FUND SOURCE

2003-04 Schedule 5-D

	Current Funds		Distribution			
	Total	Unrestricted	Restricted	Salaries and Wages	Other Expenditures	Less: Transfers
SALES AND SERVICES OF MEDICAL CENTERS						
Medical centers	-	-	-	-	-	-
OTHER SOURCES						
Instruction	351	351	-	79	273	1
Research	287	287	-	530	551	794
Public service	147	147	-	92	67	12
Academic support	22	22	-	305	438	721
Medical centers	-	-	-	-	-	-
Student services	2,845	2,845	-	1,022	1,907	84
Institutional support	1,476	1,476	-	7,501	12,915	18,940
Operation and maintenance of plant	63	63	-	3,511	6,118	9,566
Student financial aid	291	291	-	-	291	-
Auxiliary enterprises	-	-	-	-	-	-
Total	5,482	5,482	-	13,040	22,560	30,118
RESERVES						
Instruction	-	-	-	-	-	-
Research	-	-	-	-	-	-
Public service	-	-	-	-	-	-
Academic support	(106)	(106)	-	-	(106)	-
Medical centers	-	-	-	-	-	-
Student services	159	159	-	51	108	-
Institutional support	21	21	-	423	221	623
Operation and maintenance of plant	9	9	-	-	9	-
Student financial aid	-	-	-	-	-	-
Auxiliary enterprises	115	115	-	-	115	-
Total	198	198	-	474	347	623
Total Current Funds Expenditures	\$ 354,874	\$ 263,906	\$ 90,968	\$ 211,272	\$ 190,303	\$ 46,701

(1) Excludes State Specific General Funds

(2) Includes State Specific General Funds

Riverside

(Dollars in Thousands)

CURRENT FUNDS RECEIPTS

2002-03 Schedule 5-A

	Total	Unrestricted		Restricted
		General	Designated	
<u>TUITION AND FEES</u>				
Regular session	\$ 70,284	\$ 8,651	\$ 61,633	\$ -
Summer session	3,206	-	3,206	-
University extension and continuing education	11,245	-	11,245	-
Subtotal	84,735	8,651	76,084	-
Scholarship Allowance	(10,525)	-	(10,525)	-
Total	74,210	8,651	65,559	-
<u>FEDERAL GOVERNMENT</u>				
Appropriations	1,241	-	-	1,241
Grants	58,838	-	8,515	50,323
Contracts	3,299	-	479	2,820
Total	63,378	-	8,994	54,384
<u>STATE GOVERNMENT</u>				
Appropriations	164,133	151,314	-	12,819
Contracts	5,908	-	509	5,399
Total	170,041	151,314	509	18,218
<u>LOCAL GOVERNMENT</u>				
	1,996	-	271	1,725
<u>PRIVATE GIFTS, GRANTS AND CONTRACTS</u>				
	27,712	-	1,512	26,200
<u>SALES AND SERVICES OF EDUCATIONAL ACTIVITIES</u>				
	3,280	-	3,280	-
<u>SALES AND SERVICES OF AUXILIARY ENTERPRISES</u>				
Intercollegiate athletics	-	-	-	-
Parking operations	3,609	-	3,609	-
Residence and dining halls	29,488	-	29,488	-
Student union and bookstore	7,686	-	7,686	-
Other	2,595	-	2,595	-
Subtotal	43,378	-	43,378	-
Scholarship Allowance	(4,149)	-	(4,149)	-
Total	39,229	-	39,229	-
<u>SALES AND SERVICES OF MEDICAL CENTERS</u>				
	-	-	-	-
<u>OTHER SOURCES</u>				
Service Enterprises	1,237	-	1,237	-
Other	5,522	-	5,522	-
Subtotal	6,759	-	6,759	-
Scholarship Allowance	(148)	-	(148)	-
Total	6,611	-	6,611	-
Total Current Funds Receipts	\$ 386,457	\$ 159,965	\$ 125,965	\$ 100,527

Riverside

CURRENT FUNDS EXPENDITURES
BY UNIFORM CLASSIFICATION CATEGORY

2002-03 Schedule 5-B

(Dollars in Thousands)

	Current Funds				Distribution		
	Total	Unrestricted		Restricted	Salaries and Wages	Other Expenditures	Less: Transfers
		General	Designated				
INSTRUCTION							
GENERAL ACADEMIC							
Agriculture and natural resources	\$ 7,349	\$ 6,607	\$ 522	\$ 220	\$ 4,979	\$ 2,380	\$ 10
Area studies	20	18	2	-	1	19	-
Biological sciences	5,899	5,731	135	33	3,964	1,951	16
Business and management	269	-	192	77	56	220	7
Computer and Information Sciences	4,394	4,017	104	273	3,301	1,093	-
Education	4,551	4,379	90	82	3,454	1,097	-
Engineering	6,705	6,163	60	482	4,498	2,207	-
Fine and applied arts	5,381	5,117	115	149	4,006	1,383	8
Foreign languages	2,191	2,177	9	5	1,675	516	-
Health professions-medicine	4,523	3,917	597	9	2,951	1,617	45
Letters	9,623	9,299	171	153	7,580	2,043	-
Library sciences	125	102	-	23	109	16	-
Mathematics	5,609	5,520	37	52	4,487	1,122	-
Physical education	295	232	64	(1)	235	69	9
Physical sciences	13,332	11,454	1,013	865	8,469	4,863	-
Psychology	3,618	3,502	103	13	2,638	980	-
Social sciences	18,126	17,750	174	202	13,305	5,046	225
Interdisciplinary studies	446	420	2	24	740	(294)	-
Theology	941	926	3	12	733	208	-
Compensated absences accrual	48	43	(22)	27	48	-	-
Other provisions	-	-	-	-	-	-	-
Total	93,445	87,374	3,371	2,700	67,229	26,536	320
OCCUPATIONAL AND VOCATIONAL	-	-	-	-	-	-	-
SUMMER SESSION	1,987	605	1,382	-	1,538	462	13
UNIVERSITY EXTENSION	13,997	311	12,606	1,080	7,946	7,219	1,168
EDUCATIONAL FEE EXPENSE PRORATION	-	(9,901)	9,901	-	-	-	-
Subtotal	109,429	78,389	27,260	3,780	76,713	34,217	1,501
ELIMINATED CAPITAL EXPENDITURES	(13,372)	(11,580)	(743)	(1,049)	(3,276)	(10,096)	-
Total Instruction	96,057	66,809	26,517	2,731	73,437	24,121	1,501

Riverside

CURRENT FUNDS EXPENDITURES

(Dollars in Thousands)

BY UNIFORM CLASSIFICATION CATEGORY

2002-03 Schedule 5-B

	Current Funds			Distribution			Less: Transfers
	Total	Unrestricted		Restricted	Salaries and Wages	Other Expenditures	
		General	Designated				
RESEARCH							
INSTITUTES AND RESEARCH CENTERS							
Agriculture and natural resources	11	10	-	1	1	10	-
Biological sciences	1,465	597	8	860	1,073	392	-
Criminology	891	224	59	608	419	472	-
Engineering	7,023	560	(672)	7,135	3,961	4,824	1,762
Fine and applied arts	1	-	-	1	-	1	-
Library science	1,131	49	49	1,033	583	548	-
Physical sciences	1,495	(12)	111	1,396	449	1,046	-
Social sciences	2,296	315	163	1,818	507	1,789	-
Interdisciplinary studies	198	124	15	59	117	85	4
Total	14,511	1,867	(267)	12,911	7,110	9,167	1,766
INDIVIDUAL OR PROJECT RESEARCH							
Agriculture and natural resources	40,856	20,648	317	19,891	25,386	15,478	8
Area studies	1	1	-	-	-	1	-
Biological sciences	5,371	1,744	(73)	3,700	2,916	2,466	11
Business and management	(64)	-	(5)	(59)	(53)	(11)	-
Computer and information sciences	1,526	151	(41)	1,416	998	528	-
Education	2,290	36	386	1,868	1,497	793	-
Engineering	2,920	312	25	2,583	1,572	1,348	-
Fine and applied arts	59	3	23	33	29	30	-
Foreign languages	11	-	11	-	2	9	-
Health professions-medicine	1,963	18	21	1,924	983	980	-
Letters	113	59	4	50	57	56	-
Mathematics	436	249	2	185	342	94	-
Physical sciences	8,711	260	408	8,043	3,960	4,751	-
Psychology	1,248	38	-	1,210	763	485	-
Social sciences	896	164	163	569	515	381	-
Interdisciplinary studies	(117)	(332)	184	31	63	(180)	-
Theology	55	3	10	42	27	28	-
Compensated absences accrual	(98)	(253)	(33)	188	(98)	-	-
Other	210	203	296	(289)	(3)	213	-
Total	66,387	23,304	1,698	41,385	38,956	27,450	19
Subtotal	80,898	25,171	1,431	54,296	46,066	36,617	1,785
ELIMINATED CAPITAL EXPENDITURES	(7,838)	(862)	(130)	(6,846)	-	(7,838)	-
Total Research	73,060	24,309	1,301	47,450	46,066	28,779	1,785

Riverside

CURRENT FUNDS EXPENDITURES
BY UNIFORM CLASSIFICATION CATEGORY

2002-03 Schedule 5-B

(Dollars in Thousands)

	Current Funds			Distribution			
	Total	Unrestricted		Restricted	Salaries and Wages	Other Expenditures	Less: Transfers
		General	Designated				
<u>PUBLIC SERVICE</u>							
COMMUNITY SERVICE							
Community service projects	6,813	4,184	289	2,340	4,389	2,543	119
Cooperative extension service	7	-	8	(1)	(2)	9	-
Other	-	-	-	-	-	-	-
Compensated absences accrual	(17)	(21)	(8)	12	(17)	-	-
Subtotal	6,803	4,163	289	2,351	4,370	2,552	119
ELIMINATED CAPITAL EXPENDITURES	(236)	(194)	(26)	(16)	-	(236)	-
Total Public Service	6,567	3,969	263	2,335	4,370	2,316	119
<u>ACADEMIC SUPPORT</u>							
LIBRARIES	12,460	12,098	57	305	5,622	6,863	25
MUSEUMS AND GALLERIES	877	704	60	113	576	308	7
AUDIO VISUAL SERVICES	928	846	80	2	559	538	169
COMPUTING SUPPORT	3,341	3,140	17	184	1,937	1,819	415
ANCILLARY SUPPORT							
Fine arts productions	332	284	46	2	283	117	68
Veterinary medicine clinic	193	193	-	-	127	66	-
Vivarium	(18)	27	(45)	-	72	66	156
Shops	1,280	656	619	5	997	1,299	1,016
Other	138	136	2	-	79	84	25
Total	1,925	1,296	622	7	1,558	1,632	1,265
ACADEMIC ADMINISTRATION	15,508	14,694	477	337	11,465	4,081	38
COURSE AND CURRICULUM DEVELOPMENT	538	501	37	-	342	196	-
COMPENSATED ABSENCES ACCRUAL	28	16	16	(4)	28	-	-

Riverside

CURRENT FUNDS EXPENDITURES
BY UNIFORM CLASSIFICATION CATEGORY

2002-03 Schedule 5-B

(Dollars in Thousands)

	Current Funds			Distribution			
	Total	Unrestricted		Restricted	Salaries and Wages	Other Expenditures	Less: Transfers
		General	Designated				
EDUCATIONAL FEE EXPENSE PRORATION	-	(1,299)	1,299	-	-	-	-
Subtotal	35,605	31,996	2,665	944	22,087	15,437	1,919
ELIMINATED CAPITAL EXPENDITURES	(538)	(351)	(166)	(21)	-	(538)	-
Total Academic Support	35,067	31,645	2,499	923	22,087	14,899	1,919
STUDENT SERVICES							
ADMINISTRATION							
Dean's of students and vice chancellor-student services	2,236	1,158	1,076	2	1,245	1,475	484
Total	2,236	1,158	1,076	2	1,245	1,475	484
SOCIAL AND CULTURAL ACTIVITIES							
Cultural programs	1,471	14	1,315	142	827	644	-
Associated students	1,568	-	1,564	4	443	1,125	-
Housing services	4	-	4	-	-	4	-
Other social services	1,936	380	1,554	2	984	952	-
Public ceremonies	187	161	26	-	18	169	-
Recreational programs	6,549	1,088	4,945	516	3,253	3,385	89
Total	11,715	1,643	9,408	664	5,525	6,279	89
SUPPLEMENTARY EDUCATIONAL SERVICES							
	1,476	645	809	22	1,080	397	1
COUNSELING AND CAREER GUIDANCE							
Counseling	1,226	4	1,221	1	733	493	-
Disadvantaged student assistance	625	364	260	1	432	193	-
Foreign students programs	490	237	250	3	319	171	-
Placement	1,228	33	1,158	37	789	442	3
Total	3,569	638	2,889	42	2,273	1,299	3
FINANCIAL AID ADMINISTRATION							
	1,350	1,181	157	12	983	367	-

Riverside

CURRENT FUNDS EXPENDITURES
BY UNIFORM CLASSIFICATION CATEGORY

2002-03 Schedule 5-B

(Dollars in Thousands)

	Current Funds			Distribution			Less: Transfers
	Total	Unrestricted		Restricted	Salaries and Wages	Other Expenditures	
		General	Designated				
STUDENT ADMISSIONS AND RECORDS							
Admissions Registrar	1,092	1,084	-	8	731	361	-
Registrar	1,387	1,186	196	5	832	555	-
Total	2,479	2,270	196	13	1,563	916	-
STUDENT HEALTH SERVICES	3,066	14	3,026	26	1,687	1,442	63
COMPENSATED ABSENCES ACCRUAL	(344)	(189)	(138)	(17)	(344)	-	-
EDUCATIONAL FEE EXPENSE PRORATION	-	(7,289)	7,289	-	-	-	-
Subtotal	25,547	71	24,712	764	14,012	12,175	640
ELIMINATED CAPITAL EXPENDITURES	(417)	(71)	(329)	(17)	-	(417)	-
Total Student Services	25,130	-	24,383	747	14,012	11,758	640
INSTITUTIONAL SUPPORT							
EXECUTIVE MANAGEMENT							
Chancellors and vice-chancellors	8,185	7,879	236	70	4,910	5,141	1,866
Academic senate secretariat	126	126	-	-	86	40	-
Planning and budgeting	3,605	3,601	4	-	2,021	1,584	-
Total	11,916	11,606	240	70	7,017	6,765	1,866
FISCAL OPERATIONS							
Accounting	1,804	1,798	-	6	1,327	477	-
Auditing-internal and external	478	478	-	-	374	104	-
Cashiers	244	156	88	-	253	190	199
Contracts and grants administration	1,483	1,337	146	-	1,045	438	-
Bad debt and collections	2	-	2	-	-	2	-
Insurance management	152	152	-	-	113	39	-
Total	4,163	3,921	236	6	3,112	1,250	199

Riverside

CURRENT FUNDS EXPENDITURES
BY UNIFORM CLASSIFICATION CATEGORY

2002-03 Schedule 5-B

(Dollars in Thousands)

	Current Funds			Distribution			
	Total	Unrestricted		Restricted	Salaries and Wages	Other Expenditures	Less: Transfers
		General	Designated				
GENERAL ADMINISTRATION SERVICES							
Computer centers	3,463	3,363	100	-	2,503	2,845	1,885
Environmental health and safety	1,458	1,105	353	-	987	522	51
Personnel	1,948	1,470	476	2	1,399	579	30
Other	379	409	(31)	1	251	128	-
Total	7,248	6,347	898	3	5,140	4,074	1,966
LOGISTICAL SERVICES							
Business management	864	672	192	-	415	549	100
Construction management	1,538	286	1,252	-	1,204	1,777	1,443
Duplicating	610	-	610	-	864	2,287	2,541
Garage	334	-	334	-	391	1,796	1,853
Mail and messenger	53	-	53	-	318	1,316	1,581
Material management	940	932	4	4	914	2,090	2,064
Police	2,617	2,577	26	14	2,220	776	379
Telephone	(767)	-	(769)	2	551	1,459	2,777
Total	6,189	4,467	1,702	20	6,877	12,050	12,738
COMMUNITY RELATIONS							
Development	579	368	2	209	1,653	830	1,904
Public information	1,402	1,203	83	116	709	698	5
Publications	177	160	17	-	198	120	141
Total	2,158	1,731	102	325	2,560	1,648	2,050
COMPENSATED ABSENCES ACCRUAL							
	1,136	398	741	(3)	1,136	-	-
OTHER PROVISION							
	(1,202)	(1,418)	172	44	(2)	1,545	2,745
EDUCATIONAL FEE EXPENSE PRORATION							
	-	(2,744)	2,744	-	-	-	-
Subtotal	31,608	24,308	6,835	465	25,840	27,332	21,564

Riverside

CURRENT FUNDS EXPENDITURES
BY UNIFORM CLASSIFICATION CATEGORY

2002-03 Schedule 5-B

(Dollars in Thousands)

	Current Funds				Distribution		
	Total	Unrestricted		Restricted	Salaries and Wages	Other Expenditures	Less: Transfers
		General	Designated				
ELIMINATED CAPITAL EXPENDITURES	(1,120)	(334)	(784)	(2)	-	(1,120)	-
Total Institutional Support	30,488	23,974	6,051	463	25,840	26,212	21,564
OPERATION AND MAINTENANCE OF PLANT							
Administration	465	465	-	-	318	147	-
Building maintenance and major repairs and alterations	5,561	4,632	858	71	1,166	4,958	563
Grounds maintenance	1,487	1,485	2	-	978	691	182
Janitorial service	3,620	3,620	-	-	2,146	1,474	-
Plant service	(255)	-	(255)	-	3,186	4,299	7,740
Refuse disposal	1,084	814	262	8	365	824	105
Utilities	7,777	7,867	(90)	-	766	9,465	2,454
Compensated absences accrual	27	16	11	-	27	-	-
Other	-	-	-	-	-	-	-
Educational fee expense proration	-	(2,509)	2,509	-	-	-	-
Subtotal	19,766	16,390	3,297	79	8,952	21,858	11,044
ELIMINATED CAPITAL EXPENDITURES	(140)	(85)	(29)	(26)	-	(140)	-
Total Operation and Maintenance of Plant	19,626	16,305	3,268	53	8,952	21,718	11,044
STUDENT FINANCIAL AID	45,489	10,270	15,343	19,876	-	45,489	-
Scholarship Allowance	(14,822)	-	(14,822)	-	-	(14,822)	-
Total Student Financial Aid	30,667	10,270	521	19,876	-	30,667	-
AUXILIARY ENTERPRISES							
Apartments	2,714	-	2,714	-	1,086	1,772	144
Bookstores	7,213	-	7,213	-	987	7,312	1,086
Cafeterias	2,194	-	2,164	30	3,258	4,980	6,044
Residence halls	18,711	-	18,709	2	3,699	15,462	450
Parking	2,477	-	2,468	9	1,612	1,181	316
Compensated absences accrual	(620)	-	(620)	-	(620)	-	-
Other	2,507	27	1,904	576	1,788	2,707	1,988
Subtotal	35,196	27	34,552	617	11,810	33,414	10,028

Riverside

CURRENT FUNDS EXPENDITURES

(Dollars in Thousands)

BY UNIFORM CLASSIFICATION CATEGORY

2002-03 Schedule 5-B

	Current Funds			Distribution			
	Total	Unrestricted		Restricted	Salaries and Wages	Other Expenditures	Less: Transfers
		General	Designated				
ELIMINATED CAPITAL EXPENDITURES	(644)	-	(644)	-	-	(644)	-
Total Auxiliary Enterprises	34,552	27	33,908	617	11,810	32,770	10,028
Total Current Funds Expenditures	<u>\$ 351,214</u>	<u>\$177,308</u>	<u>\$ 98,711</u>	<u>\$ 75,195</u>	<u>\$206,574</u>	<u>\$ 193,240</u>	<u>\$ 48,600</u>

Riverside

(Dollars in Thousands)

CURRENT FUNDS EXPENDITURES BY DEPARTMENT

2002-03 Schedule 5-C

	Current Funds				Distribution		
	Total	Unrestricted		Restricted	Salaries and Wages	Other Expenditures	Less: Transfers
		General	Designated				
<u>AGRICULTURAL EXPERIMENT STATION</u>							
RESEARCH							
Agricultural operations	\$ 1,874	\$ 1,761	\$ 4	\$ 109	\$ 1,268	\$ 606	\$ -
Biochemistry	3,795	1,576	10	2,209	2,364	1,442	11
Biology	1,674	167	15	1,492	631	1,043	-
Botany and plant science	9,407	4,883	29	4,495	6,198	3,209	-
Earth sciences	511	63	20	428	297	214	-
Entomology	13,057	6,137	(22)	6,942	7,888	5,169	-
Nematology	2,120	951	38	1,131	1,100	1,020	-
Neuroscience	-	-	-	-	-	-	-
Plant pathology	4,766	2,554	192	2,020	3,192	1,577	3
Environmental sciences	5,470	2,797	71	2,602	3,804	1,673	7
Statistics	277	242	3	32	230	47	-
Total	42,951	21,131	360	21,460	26,972	16,000	21
ACADEMIC SUPPORT							
Director's office	2,434	2,437	(17)	14	1,760	674	-
Total Agricultural Experimental Station	45,385	23,568	343	21,474	28,732	16,674	21
<u>COLLEGE OF NATURAL AND AGRICULTURAL SCIENCES</u>							
INSTRUCTION							
Biochemistry	2,004	1,973	20	11	1,180	824	-
Biology	3,906	3,756	129	21	2,832	1,090	16
Botany and plant science	1,655	1,344	278	33	1,065	600	10
Chemistry	5,770	5,124	626	20	3,748	2,022	-
Environmental sciences	1,296	1,203	90	3	915	381	-
Earth sciences	1,723	1,672	43	8	1,252	471	-
Entomology	947	853	53	41	687	260	-
Institute of geophys and planetary physics	23	8	3	12	8	15	-
Interdepartmental programs and departments	3,010	2,920	(25)	115	1,818	1,417	225
Mathematics	4,451	4,363	37	51	3,600	851	-
Nematology	146	140	5	1	100	46	-
Neuroscience	1,711	1,578	72	61	1,096	615	-
Physics	5,554	4,393	341	820	3,336	2,218	-
Plant pathology	624	624	-	-	435	189	-
Statistics	1,157	1,156	-	1	887	270	-
Total	33,977	31,107	1,672	1,198	22,959	11,269	251

Riverside

(Dollars in Thousands)

CURRENT FUNDS EXPENDITURES BY DEPARTMENT

2002-03 Schedule 5-C

	Current Funds			Distribution			
	Total	Unrestricted		Restricted	Salaries and Wages	Other Expenditures	Less: Transfers
		General	Designated				
RESEARCH							
Chemistry	3,635	73	119	3,443	1,504	2,131	-
Interdepartmental programs and departments	2,557	774	(95)	1,878	868	1,689	-
Institute of geophysics and planetary physics	1,191	(352)	219	1,324	758	433	-
Mathematics	159	7	(1)	153	112	47	-
Natural reserves	364	145	3	216	174	190	-
Neuroscience	2,248	817	(3)	1,434	1,317	931	-
Physics	3,092	10	234	2,848	1,338	1,754	-
Total	13,246	1,474	476	11,296	6,071	7,175	-
ACADEMIC SUPPORT							
Agricultural operations	512	-	512	-	71	526	85
Biology	41	27	14	-	42	35	36
Botany shop	(3)	-	(3)	-	20	19	42
Boyce-east vivarium	(47)	-	(47)	-	39	34	120
Camp UCR	29	24	28	(23)	20	9	-
Center for plant cell biology	(9)	-	(9)	-	-	-	9
Chemistry shop	848	520	328	-	634	547	333
Earth science	3	-	-	3	-	3	-
Electron microscope facility	195	137	58	-	107	161	73
Natural reserves	85	85	-	-	66	19	-
Plant pathology	(20)	-	(20)	-	19	1	40
Physics shop	(262)	-	(262)	-	136	37	435
Total	1,372	793	599	(20)	1,154	1,391	1,173
Total College of Natural and Agricultural Sciences	48,595	33,374	2,747	12,474	30,184	19,835	1,424
GRADUATE SCHOOL OF MANAGEMENT							
INSTRUCTION	269	-	192	77	56	220	7
RESEARCH	(64)	-	(5)	(59)	(53)	(11)	-
PUBLIC SERVICE	243	-	28	215	180	170	107
ACADEMIC SUPPORT	6,540	6,212	327	1	5,084	1,480	24
Total Graduate School of Management	6,988	6,212	542	234	5,267	1,859	138

Riverside

(Dollars in Thousands)

CURRENT FUNDS EXPENDITURES BY DEPARTMENT

2002-03 Schedule 5-C

	Current Funds				Distribution		
	Total	Unrestricted		Restricted	Salaries and Wages	Other Expenditures	Less: Transfers
		General	Designated				
<u>SCHOOL OF EDUCATION</u>							
INSTRUCTION	4,551	4,379	90	82	3,454	1,097	-
RESEARCH	2,290	36	386	1,868	1,497	793	-
PUBLIC SERVICE	170	-	170	-	117	53	-
Total School of Education	7,011	4,415	646	1,950	5,068	1,943	-
<u>COLLEGE OF ENGINEERING</u>							
INSTRUCTION							
Electrical engineering	2,345	2,152	4	189	1,638	707	-
Center for research in intelligent systems	35	20	15	-	23	12	-
Center for environmental research and technology	140	-	-	140	63	77	-
Center for nano science and engineering	173	173	-	-	74	99	-
Chemical/environmental engineering	2,299	2,255	1	43	1,541	758	-
Computer science	4,393	4,016	104	273	3,300	1,093	-
Mechanical engineering	1,887	1,737	39	111	1,233	654	-
Total	11,272	10,353	163	756	7,872	3,400	-
RESEARCH							
Center for research in intelligent systems	474	-	(57)	531	333	141	-
Center for environmental research and technology	6,547	560	(615)	6,602	3,628	4,683	1,764
Center for nano science and engineering	1,494	(12)	110	1,396	448	1,046	-
Chemical engineering	1,528	209	19	1,300	756	772	-
Computer science	1,524	150	(41)	1,415	997	527	-
Electrical engineering	839	6	7	826	505	334	-
Mechanical engineering	554	96	(1)	459	312	242	-
Total	12,960	1,009	(578)	12,529	6,979	7,745	1,764
ACADEMIC SUPPORT							
Engineering	2,400	2,295	9	96	1,618	782	-
Total College of Engineering	26,632	13,657	(406)	13,381	16,469	11,927	1,764

Riverside

(Dollars in Thousands)

CURRENT FUNDS EXPENDITURES BY DEPARTMENT

2002-03 Schedule 5-C

	Current Funds				Distribution		
	Total	Unrestricted		Restricted	Salaries and Wages	Other Expenditures	Less: Transfers
		General	Designated				
<u>COLLEGE OF HUMANITIES AND SOCIAL SCIENCES</u>							
INSTRUCTION							
Anthropology	2,115	2,088	20	7	1,702	413	-
Art	904	871	18	15	667	237	-
Arts/art history administration	137	136	-	1	105	32	-
Art facility administration	101	101	-	-	74	27	-
Center for bibliographical studies	125	102	-	23	109	16	-
Center for ideas and society	115	81	-	34	88	27	-
Center for social and behavioral sciences	76	77	-	(1)	63	13	-
Comparative literature and foreign languages	2,185	2,172	9	4	1,674	511	-
Creative writing	707	696	4	7	561	146	-
Dance	1,024	989	25	10	760	264	-
Economics	3,387	3,329	56	2	2,611	776	-
English	6,817	6,530	153	134	5,395	1,422	-
Ethnic studies	969	964	2	3	757	212	-
Gluck administration	239	11	1	227	143	96	-
Hispanic studies	1,406	1,392	12	2	1,105	301	-
History	3,226	3,190	27	9	2,546	680	-
History of art	905	894	4	7	711	200	6
Institute-research: world systems	311	311	-	-	214	97	-
Liberal studies and interdisciplinary programs	137	136	-	1	105	32	-
Music	971	946	15	10	748	225	2
Performing arts administration	323	320	-	3	232	91	-
Philosophy	2,142	2,112	24	6	1,652	490	-
Physical education	295	232	64	(1)	235	69	9
Political sciences	1,627	1,593	28	6	1,243	384	-
Psychology	3,619	3,503	103	13	2,638	981	-
Religious studies	941	926	3	12	733	208	-
Sociology	2,927	2,847	65	15	2,213	714	-
Theatre	866	823	43	-	623	243	-
Women's studies program	612	604	3	5	464	148	-
Total	39,209	37,976	679	554	30,171	9,055	17
RESEARCH							
Anthropology	131	40	17	74	46	85	-
Archaeological research unit	121	-	114	7	89	32	-
Art	4	-	4	-	-	4	-
Center for bibliographical studies	1,131	49	49	1,033	583	548	-
Center for ideas and society	528	312	5	211	320	208	-

Riverside

(Dollars in Thousands)

CURRENT FUNDS EXPENDITURES BY DEPARTMENT

2002-03 Schedule 5-C

	Current Funds			Distribution			
	Total	Unrestricted		Restricted	Salaries and Wages	Other Expenditures	Less: Transfers
		General	Designated				
Center for social and behavioral sciences	622	167	157	298	291	331	-
Comparative literature and foreign languages	11	-	11	-	2	9	-
Creative writing	2	-	2	-	-	2	-
Dance	4	(1)	5	-	(1)	5	-
Economics	27	21	5	1	4	23	-
English	46	44	2	-	26	20	-
Ethnic studies	67	20	1	46	15	52	-
Hispanic studies	3	3	-	-	-	3	-
History	167	42	-	125	118	49	-
History of art	45	5	8	32	30	15	-
Institute reserach: world systems	(166)	(166)	-	-	(105)	(61)	-
Liberal studies and interdisciplinary programs	31	-	-	31	25	6	-
Music	6	(1)	7	-	-	6	-
Philosophy	64	15	-	49	32	32	-
Political science	24	6	-	18	17	7	-
Psychology	1,248	38	-	1,210	763	485	-
Religious studies	55	3	10	42	27	28	-
Robert presley center crime and justice	891	224	58	609	419	472	-
Sociology	346	31	19	296	225	121	-
Women's studies	12	4	8	-	3	9	-
Total	5,420	856	482	4,082	2,929	2,491	-
ACADEMIC SUPPORT							
Dean's office	2,560	2,255	86	219	1,835	739	14
Anthropology	31	20	11	-	30	26	25
Art gallery	232	202	3	27	134	98	-
UCR/california museum of photography	645	502	57	86	441	211	7
Theatre facility	333	285	46	2	284	117	68
Total	3,801	3,264	203	334	2,724	1,191	114
PUBLIC SERVICE							
Center for ideas and society	(1)	(1)	-	-	-	(1)	-
Center for social and behavioral sciences	15	-	-	15	10	5	-
Total	14	(1)	-	15	10	4	-
Total College of Humanities and Social Sciences	48,444	42,095	1,364	4,985	35,834	12,741	131

Riverside

(Dollars in Thousands)

CURRENT FUNDS EXPENDITURES BY DEPARTMENT

2002-03 Schedule 5-C

	Current Funds				Distribution		
	Total	Unrestricted		Restricted	Salaries and Wages	Other Expenditures	Less: Transfers
		General	Designated				
<u>AIR POLLUTION RESEARCH CENTER</u>							
RESEARCH	914	568	2	344	695	219	-
<u>BIOMEDICAL UCR/UCLA PROGRAM</u>							
INSTRUCTION	4,119	3,516	597	6	2,669	1,495	45
RESEARCH	1,963	18	21	1,924	983	980	-
Total	6,082	3,534	618	1,930	3,652	2,475	45
<u>GRADUATE DIVISION</u>							
ACADEMIC SUPPORT	1,535	1,460	46	29	1,135	400	-
Total	1,535	1,460	46	29	1,135	400	-
<u>SUMMER SESSION</u>							
INSTRUCTION	1,987	605	1,382	-	1,538	462	13
<u>UNIVERSITY EXTENSION</u>							
INSTRUCTION							
Professional programs	13,997	311	12,606	1,080	7,946	7,219	1,168
<u>CAMPUS WIDE PROGRAMS</u>							
INSTRUCTION							
Other	-	-	-	-	-	-	-
Compensated absences accrual	48	43	(22)	27	48	-	-
Educational fee expense proration	-	(9,901)	9,901	-	-	-	-
Total	48	(9,858)	9,879	27	48	-	-
RESEARCH							
Research committee	215	208	7	-	-	215	-
UC mexus	155	124	17	14	94	61	-
Other	946	-	296	650	(3)	949	-
Compensated absences accrual	(98)	(253)	(33)	188	(98)	-	-
Total	1,218	79	287	852	(7)	1,225	-

Riverside

(Dollars in Thousands)

CURRENT FUNDS EXPENDITURES BY DEPARTMENT

2002-03 Schedule 5-C

	Current Funds			Distribution			
	Total	Unrestricted		Restricted	Salaries and Wages	Other Expenditures	Less: Transfers
		General	Designated				
PUBLIC SERVICE							
Alpha center	1,261	931	5	325	727	534	-
Botanical gardens	59	-	59	-	17	44	2
Center for exotic pest research	91	-	91	-	-	95	4
Cultural events	11	-	11	-	-	11	-
Dean of students - sa	80	80	-	-	4	76	-
Early academic outreach	2,262	1,749	(176)	689	1,565	697	-
Governmental and community relations	737	45	(2)	694	425	312	-
Relations with schools	1,291	1,237	40	14	794	497	-
VC -public services and international programs	145	143	2	-	105	40	-
Work study programs-contracting agencies	445	-	57	388	443	2	-
Other	11	-	12	(1)	-	17	6
Compensated absences accrual	(17)	(21)	(8)	12	(17)	-	-
Total	6,376	4,164	91	2,121	4,063	2,325	12
ACADEMIC SUPPORT							
Academic computing center	3,341	3,140	17	184	1,938	1,818	415
Departmental academic support	131	128	-	3	40	91	-
Instructional media	892	808	82	2	560	501	169
International services - eap	24	24	-	-	15	9	-
Honors	402	366	36	-	247	155	-
Library general	12,457	12,095	57	305	5,622	6,859	24
Office of the campus veterinarian	193	193	-	-	127	66	-
Vice chancellor - research	55	64	(9)	-	35	20	-
Compensated absences accrual	28	16	16	(4)	28	-	-
Educational fee expense proration	-	(1,299)	1,299	-	-	-	-
Total	17,523	15,535	1,498	490	8,612	9,519	608
Total Campus-Wide Programs	25,165	9,920	11,755	3,490	12,716	13,069	620
STUDENT SERVICES							
Vice chancellor student services	1,083	917	166	-	720	363	-
Dean of students - sa	457	176	280	1	312	145	-
AVC - enrollment	495	495	-	-	164	331	-
AVC - student services -student development	59	58	-	1	43	16	-
Admissions office	1,092	1,084	-	8	731	361	-
Associated students	1,537	-	1,533	4	429	1,108	-
Campus health service	3,067	14	3,027	26	1,688	1,442	63

Riverside

(Dollars in Thousands)

CURRENT FUNDS EXPENDITURES BY DEPARTMENT

2002-03 Schedule 5-C

	Current Funds				Distribution		
	Total	Unrestricted		Restricted	Salaries and Wages	Other Expenditures	Less: Transfers
		General	Designated				
Career services center	1,228	33	1,158	37	789	442	3
Counseling center	848	4	843	1	632	216	-
Cultural events	409	-	386	23	114	296	1
Event management and protocol	174	157	17	-	17	157	-
Financial aids administration	1,350	1,181	157	12	983	367	-
Intercollegiate athletics	4,766	1,069	3,182	515	2,322	2,444	-
International service center	490	237	250	3	319	171	-
Learning center	1,476	645	809	22	1,080	396	-
Registrar office	1,387	1,186	196	5	832	555	-
Relations with schools	500	393	107	-	272	232	4
Student fees	582	-	582	-	-	582	-
Student programs	1,776	12	1,646	118	1,132	644	-
Student life and leadership center	1,205	4	1,199	2	414	791	-
Student recreation center	1,765	-	1,763	2	931	923	89
Student special services	625	364	260	1	432	193	-
Chancellor's unallocated	(480)	(480)	-	-	-	-	480
Compensated absences accrual	(344)	(189)	(138)	(17)	(344)	-	-
Educational fee expense proration	-	(7,289)	7,289	-	-	-	-
Total Student Services	25,547	71	24,712	764	14,012	12,175	640
<u>INSTITUTIONAL SUPPORT</u>							
Chancellor's office	4,214	2,553	1,625	36	954	3,541	281
Executive vice chancellor	1,524	1,494	27	3	1,175	349	-
Vice chancellor administration	64	653	(589)	-	516	162	614
Vice chancellor - research	1,656	1,510	146	-	1,185	471	-
Vice chancellor university advancement	377	1,334	(974)	17	938	472	1,033
Academic planning and budget	3,605	3,601	4	-	2,021	1,584	-
Academic senate office	126	126	-	-	86	40	-
Accounting	1,690	1,684	-	6	1,238	452	-
Affirmative action	232	232	-	-	158	74	-
Alumni and constituent relations	503	487	6	10	357	147	1
Audit and advisory services	478	478	-	-	374	104	-
Building lease office	168	168	-	-	-	168	-
Building lease classroom	123	123	-	-	-	123	-
Cashier	244	156	88	-	253	190	199
Computing and communications	4,004	3,896	108	-	2,995	3,108	2,099
Creative design services	88	71	17	-	160	66	138
Design and construction	1,538	286	1,252	-	1,204	1,777	1,443
Desert facilities and programs	401	401	-	-	251	150	-
Development	221	29	-	192	1,420	705	1,904
Environmental health and safety	1,458	1,105	353	-	987	522	51
Equipment management	104	104	-	-	104	54	54
Event management and protocol	439	241	82	116	152	295	8

Riverside

(Dollars in Thousands)

CURRENT FUNDS EXPENDITURES BY DEPARTMENT

2002-03 Schedule 5-C

	Current Funds				Distribution		
	Total	Unrestricted		Restricted	Salaries and Wages	Other Expenditures	Less: Transfers
		General	Designated				
Fleet services	80	-	80	-	332	1,479	1,731
Full costing	(1,134)	-	(1,134)	-	-	-	1,134
Governmental and community relations	353	327	21	5	208	148	3
Human resources	1,605	1,273	330	2	1,121	515	31
Insurance	152	152	-	-	113	39	-
Labor relations	342	197	145	-	278	64	-
Mail services	53	-	53	-	318	1,316	1,581
Marketing media relations	962	962	-	-	557	405	-
New initiatives and economic development	357	339	1	17	232	125	-
Ombudsman	75	75	-	-	59	16	-
Printing and reprographics	610	-	610	-	864	2,287	2,541
Police	2,618	2,578	26	14	2,221	776	379
Publications	88	88	-	-	37	51	-
Purchasing	628	631	(4)	1	529	167	68
Receiving	198	197	1	-	112	86	-
Storehouse	10	-	8	2	169	1,784	1,943
Student business services	573	381	192	-	415	258	100
Telecommunications	(767)	-	(769)	2	551	1,459	2,777
Transportation and parking services	254	-	254	-	60	316	122
Other	156	(1,278)	1,389	45	-	1,485	1,329
Bad debts and collections	2	-	2	-	-	2	-
Compensated absences accrual	1,136	398	741	(3)	1,136	-	-
Educational fee expense proration	-	(2,744)	2,744	-	-	-	-
Total Institutional Support	31,608	24,308	6,835	465	25,840	27,332	21,564
OPERATION AND MAINTENANCE OF PLANT							
Superintendance	465	465	-	-	318	147	-
Building maintenance	4,547	4,507	40	-	742	3,805	-
Environmental health and safety	843	592	251	-	249	594	-
Grounds maintenance	1,487	1,485	2	-	978	691	182
Janitorial service	3,597	3,620	(23)	-	2,470	1,690	563
Plant service	(255)	-	(255)	-	3,186	4,299	7,740
Refuse disposal	242	222	12	8	117	230	105
Steam	1,173	1,176	(3)	-	681	561	69
Utilities	6,604	6,692	(88)	-	85	8,904	2,385
Chancellors house maintenance	663	-	663	-	-	663	-
Major repairs and alterations	65	36	29	-	-	65	-
Boyd desert research center	4	3	1	-	-	4	-
Emerson reserve	8	2	2	4	4	4	-
Granite mountain reserve	63	-	60	3	5	58	-
James san jacinto mountains reserve	139	83	35	21	71	68	-
Motte reserve	65	-	23	42	12	53	-
Natural land and water							

Riverside

(Dollars in Thousands)

CURRENT FUNDS EXPENDITURES BY DEPARTMENT

2002-03 Schedule 5-C

	Current Funds			Distribution			
	Total	Unrestricted		Restricted	Salaries and Wages	Other Expenditures	Less: Transfers
		General	Designated				
reserve system	29	-	28	1	7	22	-
Compensated absences accrual	27	16	11	-	27	-	-
Educational fee expense proration	-	(2,509)	2,509	-	-	-	-
Total Operation and Maintenance of Plant	19,766	16,390	3,297	79	8,952	21,858	11,044
STUDENT FINANCIAL AID	45,489	10,270	15,343	19,876	-	45,489	-
Scholarship Allowance	(14,822)	-	(14,822)	-	-	(14,822)	-
Total Student Financial Aid	30,667	10,270	521	19,876	-	30,667	-
AUXILIARY ENTERPRISES							
Residence halls	18,711	-	18,709	2	3,876	15,876	1,041
Campus apartments	2,714	-	2,714	-	1,086	1,772	144
Student center direction	490	-	490	-	263	987	760
Parking and transportation	2,477	-	2,468	9	1,612	1,181	316
Campus life, facilities and services administration	138	-	137	1	340	197	399
Child care center	1,383	27	781	575	851	532	-
Bookstore	7,213	-	7,213	-	987	7,312	1,086
Dining service	2,690	-	2,660	30	3,415	5,557	6,282
Compensated absences accrual	(620)	-	(620)	-	(620)	-	-
Total Auxiliary Enterprises	35,196	27	34,552	617	11,810	33,414	10,028
Subtotal	375,519	190,785	101,562	83,172	209,850	214,269	48,600
Eliminated Capital Expenditures	(24,305)	(13,477)	(2,851)	(7,977)	(3,276)	(21,029)	-
Total Current Funds Expenditures	\$ 351,214	\$ 177,308	\$ 98,711	\$ 75,195	\$ 206,574	\$ 193,240	\$ 48,600

Riverside

(Dollars in Thousands)

CURRENT FUNDS EXPENDITURES BY FUND SOURCE

2002-03 Schedule 5-D

	Current Funds			Distribution		
	Total	Unrestricted	Restricted	Salaries and Wages	Other Expenditures	Less: Transfers
GENERAL FUNDS						
Instruction	\$ 66,809	\$ 66,809	\$ -	\$ 62,916	\$ 3,893	\$ -
Research	24,309	24,309	-	17,991	6,328	10
Public service	3,969	3,969	-	2,606	1,363	-
Academic support	31,645	31,645	-	20,131	11,514	-
Medical centers	-	-	-	-	-	-
Student services	-	-	-	5,087	(4,607)	480
Institutional support	23,974	23,974	-	18,025	7,279	1,330
Operation and maintenance of plant	16,305	16,305	-	5,221	11,084	-
Student financial aid	10,270	10,270	-	-	10,270	-
Auxiliary enterprises	27	27	-	21	6	-
Total	177,308	177,308	-	131,998	47,130	1,820
TUITION AND FEES						
Instruction	24,235	24,235	-	8,030	17,143	938
Research	(13)	(13)	-	-	(13)	-
Public service	35	35	-	19	16	-
Academic support	1,645	1,645	-	163	1,482	-
Medical centers	-	-	-	-	-	-
Student services	20,819	20,819	-	7,750	13,069	-
Institutional support	2,744	2,744	-	-	2,744	-
Operation and maintenance of plant	2,509	2,509	-	-	2,509	-
Student financial aid	15,723	15,723	-	-	15,723	-
Auxiliary enterprises	908	908	-	175	733	-
Total	68,605	68,605	-	16,137	53,406	938

Riverside

(Dollars in Thousands)

CURRENT FUNDS EXPENDITURES BY FUND SOURCE

2002-03 Schedule 5-D

	Current Funds		Distribution			
	Total	Unrestricted	Restricted	Salaries and Wages	Other Expenditures	Less: Transfers
FEDERAL GOVERNMENT						
<u>Appropriations</u>						
Research	1,102	-	1,102	1,094	8	-
Public service	-	-	-	-	-	-
Academic support	11	-	11	-	11	-
Total	1,113	-	1,113	1,094	19	-
<u>Grants</u>						
Instruction	125	-	125	111	14	-
Research	24,515	-	24,515	14,346	10,169	-
Public service	1,334	-	1,334	903	431	-
Academic support	347	-	347	274	73	-
Medical centers	-	-	-	-	-	-
Student services	72	-	72	73	(1)	-
Institutional support	33	-	33	30	3	-
Operation and maintenance of plant	1	-	1	1	-	-
Student financial aid	20,499	-	20,499	-	20,499	-
Auxiliary enterprises	56	-	56	53	3	-
Total	46,982	-	46,982	15,791	31,191	-
<u>Contracts</u>						
Instruction	-	-	-	-	-	-
Research	2,789	-	2,789	1,681	1,108	-
Public Service	-	-	-	-	-	-
Academic support	-	-	-	-	-	-
Medical centers	-	-	-	-	-	-
Student services	-	-	-	-	-	-
Institutional support	-	-	-	-	-	-
Operation and maintenance of plant	-	-	-	-	-	-
Student financial aid	-	-	-	-	-	-
Total	2,789	-	2,789	1,681	1,108	-
Total Federal Government	50,884	-	50,884	18,566	32,318	-

Riverside

(Dollars in Thousands)

CURRENT FUNDS EXPENDITURES BY FUND SOURCE

2002-03 Schedule 5-D

	Current Funds		Distribution			
	Total	Unrestricted	Restricted	Salaries and Wages	Other Expenditures	Less: Transfers
<u>SPECIAL STATE APPROPRIATIONS AND CONTRACTS</u>						
Instruction	1,715	-	1,715	788	927	-
Research	5,223	-	5,223	2,779	2,444	-
Public service	635	-	635	390	245	-
Academic support	235	-	235	115	120	-
Medical centers	-	-	-	-	-	-
Student services	32	-	32	1	31	-
Institutional support	45	-	45	-	45	-
Operation and maintenance of plant	-	-	-	-	-	-
Student financial aid	(2,548)	-	(2,548)	-	(2,548)	-
Auxiliary enterprises	549	-	549	274	275	-
Total	5,886	-	5,886	4,347	1,539	-
<u>LOCAL GOVERNMENT</u>						
Instruction	-	-	-	-	-	-
Research	670	-	670	683	(13)	-
Public service	133	-	133	69	64	-
Academic support	-	-	-	-	-	-
Medical centers	-	-	-	-	-	-
Student services	-	-	-	-	-	-
Institutional support	-	-	-	-	-	-
Operation and maintenance of plant	-	-	-	-	-	-
Student financial aid	-	-	-	-	-	-
Auxiliary enterprises	-	-	-	-	-	-
Total	803	-	803	752	51	-
<u>PRIVATE GIFTS, GRANTS AND CONTRACTS</u>						
Instruction	891	-	891	441	450	-
Research	12,818	-	12,818	6,352	6,466	-
Public service	239	-	239	123	116	-
Academic support	330	-	330	215	115	-
Medical centers	-	-	-	-	-	-
Student services	643	-	643	128	515	-
Institutional support	385	-	385	134	251	-
Operation and maintenance of plant	52	-	52	8	44	-
Student financial aid	1,102	-	1,102	-	1,102	-
Auxiliary enterprises	12	-	12	-	12	-
Total	16,472	-	16,472	7,401	9,071	-

Riverside

(Dollars in Thousands)

CURRENT FUNDS EXPENDITURES BY FUND SOURCE

2002-03 Schedule 5-D

	Current Funds		Distribution			
	Total	Unrestricted	Restricted	Salaries and Wages	Other Expenditures	Less: Transfers
<u>ENDOWMENT AND SIMILAR FUNDS</u>						
Instruction	658	658	-	470	188	-
Research	636	303	333	303	333	-
Public service	(3)	3	(6)	(2)	(1)	-
Academic support	86	86	-	38	48	-
Medical centers	-	-	-	-	-	-
Student services	50	50	-	-	50	-
Institutional support	1,234	1,234	-	44	1,190	-
Operation and maintenance of plant	839	839	-	21	818	-
Student financial aid	931	108	823	-	931	-
Auxiliary enterprises	-	-	-	-	-	-
Total	4,431	3,281	1,150	874	3,557	-
<u>SALES AND SERVICES OF EDUCATIONAL ACTIVITIES</u>						
Instruction	551	551	-	305	338	92
Research	(173)	(173)	-	324	350	847
Public service	284	284	-	192	206	114
Academic support	868	868	-	405	1,003	540
Student services	954	954	-	197	850	93
Institutional support	30	30	-	39	102	111
Student financial aid	-	-	-	-	-	-
Auxiliary enterprises	-	-	-	-	-	-
Total	2,514	2,514	-	1,462	2,849	1,797
<u>SALES AND SERVICES OF AUXILIARY ENTERPRISES</u>						
Instruction	320	320	-	275	294	249
Academic support	-	-	-	-	-	-
Student services	198	198	-	90	108	-
Institutional support	702	702	-	780	121	199
Operation and maintenance of plant	-	-	-	-	-	-
Student financial aid	-	-	-	-	-	-
Auxiliary enterprises	32,796	32,796	-	11,037	31,557	9,798
Total	34,016	34,016	-	12,182	32,080	10,246

Riverside

(Dollars in Thousands)

CURRENT FUNDS EXPENDITURES BY FUND SOURCE

2002-03 Schedule 5-D

	Current Funds			Distribution		
	Total	Unrestricted	Restricted	Salaries and Wages	Other Expenditures	Less: Transfers
<u>SALES AND SERVICES OF MEDICAL CENTERS</u>						
Medical centers	-	-	-	-	-	-
<u>OTHER SOURCES</u>						
Instruction	753	753	-	101	874	222
Research	1,180	1,180	-	513	1,595	928
Public service	(59)	(59)	-	70	(124)	5
Academic support	(105)	(105)	-	746	528	1,379
Medical centers	-	-	-	-	-	-
Student services	2,205	2,205	-	629	1,643	67
Institutional support	1,281	1,281	-	6,411	14,189	19,319
Operation and maintenance of plant	(80)	(80)	-	3,701	7,263	11,044
Student financial aid	(15,310)	(15,310)	-	-	(15,310)	-
Auxiliary enterprises	198	198	-	250	178	230
Total	(9,937)	(9,937)	-	12,421	10,836	33,194
<u>RESERVES</u>						
Instruction	-	-	-	-	-	-
Research	4	4	-	-	4	-
Public service	-	-	-	-	-	-
Academic support	5	5	-	-	5	-
Medical centers	-	-	-	-	-	-
Student services	157	157	-	57	100	-
Institutional support	60	60	-	377	288	605
Operation and maintenance of plant	-	-	-	-	-	-
Student financial aid	-	-	-	-	-	-
Auxiliary enterprises	6	6	-	-	6	-
Total	232	232	-	434	403	605
Total Current Funds Expenditures	\$ 351,214	\$ 276,019	\$ 75,195	\$ 206,574	\$ 193,240	\$ 48,600



December 6, 2005

Andrew Grosovsky
Vice Provost, Undergraduate Academic Programs
Professor of Cell Biology
UC Riverside
Office of Undergraduate Studies
1657 Statistics C
Riverside, CA 92521

Dear Andrew:

At its November 30, 2005 meeting, a Panel of the Proposal Review Committee considered the institutional proposal submitted by the University of California, Riverside for its next reaffirmation of accreditation review. The members of the Panel asked me to express their appreciation for your participation in the telephone conference call, and for that of your colleagues Ellen Wartella, EVC/Provost; Susan Carter, Faculty Co-chair of the Steering Committee; Yolanda Moses, Vice Provost and Administrative Co-chair of the Steering Committee; Timothy Paine, Faculty Co-chair of the Subcommittee on Educational Effectiveness; Steven Brint, Faculty Co-chair of the Subcommittee on Institutional Capacity; and Robert Gill, Special Consultant to the Executive Vice Chancellor/Provost. We regret that the difficulties with the telephone made it hard for us to hear one another, but we appreciated the opportunity to interact with this broad group of campus leaders whom you had gathered. Their answers to questions and their elaborations on the Proposal were helpful to panel members' understanding of the context and plans for the review.

As indicated in my November 30, 2005 email to you, the Committee acted to accept the UCR Proposal. The Proposal sets forth a design for the review that effectively addresses University priorities, goals, and strategies within the context of the WASC Standards and review process. The identified outcomes for the review appear substantive, cross-cutting, and in alignment with Chancellor Cordova's seven goals for the campus.

The Panel commended the selection of educational effectiveness themes that are appropriate for UCR and important for the University of California and higher education. The theme of *Learning within a Campus Culture of Diversity* includes an impressive array of research questions that clearly link

985 Atlantic Avenue, Suite 100
Alameda, CA 94501
PHONE: 510.748.9001
FAX: 510.748.9797
E-MAIL: wascst@wascsenior.org
INTERNET: www.wascweb.org

CHAIR
John D. Welty, Chair
California State University, Fresno

VICE CHAIR
Sherwood G. Lingenfelter, Vice Chair
Fuller Theological Seminary

Dede Alpert
Public Member

James R. Appleton
University of Redlands

Lisa Marie Beardsley
Loma Linda University

Mark Bookman
University of Judaism

W. Bernard Bowler
Public Member

Barbara Cambridge
Carnegie Academy and N.C.T.E.

Jerry Dean Campbell
University of Southern California

Kenyon S. Chan
Occidental College

Aimee Dorr
University of California, Los Angeles

Laurence Gould
Public Member

James E. Lyons, Sr.
*California State University,
Dominguez Hills*

Christina Maslach
University of California, Berkeley

Tomás Morales
*California State Polytechnic
University, Pomona*

Thomas H. Robinson
School's Commission Representative

Martha C. Romero
*Community and Junior Colleges
Commission Representative*

Eleanor Dantzier Siebert
Alumni St. Mary's College

Mary Kay Tetreault
Portland State University

Laura Trombley
Pitzer College

Sue Wesselkamper
Chaminade University of Honolulu

STAFF
Ralph A. Wolff
Executive Director

Elizabeth Griego
Associate Director

Neil Hoffman
Associate Director

Richard A. Winn
Associate Director

Barbara Wright
Associate Director

Christie Jones
*Assistant Director for Research
and Substantive Change*

Lee West
*Assistant Director for
Commission Support*

Robert R. Benedetti
Adjunct Associate Director

Richard C. Giardina
Adjunct Associate Director

Bill Gong
Finance & Operations Manager

diversity and academic excellence in the context of a research university setting. The Panel further commended the University's intention in themes two and three to develop program-level and institution-wide learning outcomes and the means of assessing them at the undergraduate and graduate levels. All three themes are in alignment with WASC's emphasis on learning centeredness, and all three represent significant and consequential areas of inquiry for the campus over the next five years and beyond. The Panel appreciated the care, evident thoughtfulness, and spirit of collaboration with which the UCR leadership has developed the Proposal.

As we discussed in the conference call, however, there was some concern that the Proposal may be overly ambitious precisely because the themes are so encompassing and far reaching. It was reassuring to hear strong support for the Proposal from Provost Wartella and to understand that the reaffirmation of accreditation process is viewed as crucial to helping create a culture change at UCR that is to be centered on developing evidence of student learning and achievement. The Panel cautions the University that it will be important to plan carefully for how best to support faculty with appropriate coaching and resources for assessment as you develop program outcomes and assessment processes related to the three themes for the review.

A strong organizing effort is ahead. Effective internal communication and continuing leadership support will be crucial to a successful review. The Panel recommended that additional thought be given to the workplan for conducting the review. The Institutional Capacity and Educational Effectiveness Subcommittees will need to work closely together so that the overall review process is coordinated to address the themes and outcomes. The University will need to be strategic about how it will organize, oversee, and support these two committees, along with the other standing and ad hoc groups that will be involved in the review process during its several stages. While the inquiry methodology for each theme is outlined in the Proposal, a much more detailed plan and timeline will need to be developed for each of the three themes that assigns responsibilities and specifies targeted outcomes for each theme. There has been a good start from the partnering of faculty and administrative leaders in the development of the Proposal, but further thought will need to be given to integrating the review with ongoing faculty senate and administrative structures, committees, and processes to streamline efforts, increase the long-term value of the work, and adopt the new processes.

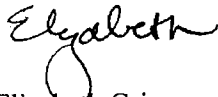
As you know, at its June meeting, the Commission reviewed comments from institutions on the timing between the Capacity & Preparatory and the Educational Effectiveness Reviews and has now made the normative schedule between visits to be 18 months. Therefore, the Capacity & Preparatory Review will be conducted in spring 2008 followed by the Educational Effectiveness Review in fall 2009. The Proposal as approved now becomes the framework for the accreditation review process and represents a plan of action and commitment by the institution. The Proposal will be distributed to visiting teams for both the Capacity & Preparatory Review and the Educational Effectiveness Review, and with the Commission following each Review. The data tables and relevant material are to be updated and included as part of the Capacity and Preparatory Review presentation. It is understood that adjustments in the activities undertaken as outlined in the Proposal will be made as implementation occurs. Major changes to the Proposal,

Andrew Grosovsky
December 6, 2005
Page 3

such as a change in theme or in major focus of activities for the accreditation process, are to be approved in advance by Commission staff.

Congratulations on the acceptance of your Proposal. I look forward to working with you and the UCR community as you prepare for the review. Please do not hesitate to call on me if I can be of any assistance along the way.

Sincerely,



Elizabeth Griego
Associate Director

Cc: Frances Cordova, Chancellor
Proposal Review Committee
Ralph A. Wolff